



Fort Lauderdale Police Department



Response to Resistance Report 2018

TABLE OF CONTENTS

Message from the Chief of Police..... 2

Executive Summary.....3

Introduction..... 4

2018 At A Glance.....6

Types of Force Use..... 7

Response to Resistance Effectiveness..... 8

Charges During Response.....10

Reasons for Use of Force.....11

Services Rendered.....12

How Do I Make A Complaint.....13

Senior Staff.....15



Message from the Chief of Police



On behalf of the women and men of the Fort Lauderdale Police Department, thank you for taking the time to review our Annual Response to Resistance Report.

Fort Lauderdale is the largest city in Broward County and one of the most popular tourist destinations in the State of Florida. Here at the Fort Lauderdale Police Department, we are committed to building community, reducing crime, and improving the quality of life for our neighbors and visitors.

As your Chief of Police, I am excited by the opportunities we face as a community and invite our neighbors to participate in our efforts to keep the City safe.

We look forward to serving you with respect, integrity, and courage.

Rick Maglione
Chief of Police

Report Created & Edited by:
Wesley Acosta
Management Analyst

Captain Michael Dodson
Executive Officer

EXECUTIVE SUMMARY

It is the goal of the Fort Lauderdale Police Department to build community and strengthen partnerships with our neighbors to reduce crime and nuisances. It is also the Department's mission to provide a safe and orderly environment in the City through professionalism, dedication, and concern for individual dignity. At times, in the course of performing their duties, officers may encounter individuals who need to be detained for investigation or require arrest after violating the law. During these situations, a police officer may encounter resistance ranging from non-compliance to contentious and aggressive behavior. It is the policy of the Fort Lauderdale Police Department that officers respond to resistance with only the force necessary to effect lawful objectives.

The City of Fort Lauderdale has a residential population of over 180,000 and attracted an estimated 12.8 million visitors in 2018. These numbers continue to grow as the city continues to host popular events such as the Tortuga Music Festival, Riptide Music Festival, and Pride Fort Lauderdale on the Beach along with being a popular tourist destination.

This report has been produced in an effort to build trust and provide transparency regarding the activities of the Fort Lauderdale Police Department. It outlines the number of incidents involving officers responding to resistance. It includes the responses to resistance and their effectiveness, criminal charges associated, and much more.

In 2018, the Office of Internal Affairs conducted an administrative review of 838 response to resistance offense/incident reports compared to 602 reports reviewed in 2017. The increase of incident reports reviewed is attributed to increases in arrests, calls for service, and traffic stops. DUI incidents alone increased from 114 in 2017 to 483 in 2018. Additionally, Baker Act incidents also increased by 2.2% in 2018.

All responses complied with policy except for a non-injury accidental K-9 contact. There were 3 intentional firearm discharges, which resulted in the death of a suspect during a single police-involved shooting. This incident is the only incident currently under review by the Broward County State Attorney's Office.



INTRODUCTION



The information presented in this report is intended to provide a summary of the types of incidents and actions by officers when they encountered resistance. In 2016, the Fort Lauderdale Police Department implemented recommendations taken from the President’s Task Force on 21st Century Policing. These included fostering stronger, collaborative relationships between our agency and the community we are responsible for protecting. They also promote effective crime reduction strategies and public trust.

Sworn staff has received extensive in-service training focused on de-escalating situations to include Fair and Impartial Policing Training, Crisis Intervention Training (CIT), and Procedural Justice Training. As of December 31, 2018, the Fort Lauderdale Police Department has 184 Officers certified in CIT and 443 have completed the CIT familiarization course.

In addition to training, the Fort Lauderdale Police Department continues to conduct youth focus groups to address the issue of overrepresentation of minority youth in Florida’s juvenile justice system. This also provides better understanding of the numerous factors involved during contact with an individual. Body worn cameras are now in use to increase the ability of officers to effectively enforce the law, obtain evidence for criminal prosecutions, and document interactions with the public. The cameras increase departmental transparency and improve conduct by all parties during police/public interactions.

In 2018, calls for service increased to 210,635 and the Office of Internal Affairs conducted administrative reviews of 838 incidents reports. These reports accounted for less than half of 1% of all calls for service. In comparison, the Bureau of Justice Statistics reported 2% of individuals who had contact with police in the U.S. experienced use of force¹.

1. Source: <https://www.bjs.gov/index.cfm?ty=pbdetail&iid=6406>,



2018 TOTALS



In 2018, **210,635 calls for service** were received. Compared to 2017, there was an increase of 16%. Calls for service are calls received by dispatch requiring response by a police officer or a police service aide. An increase in calls for service does not mean an increase in crime.



A total of **56,770 citations** were issued during 2018. Citations increased 48% from 2017 in an effort to eliminate traffic injuries and fatalities. The top 5 charges were unlawful speed, improper insurance, failure to wear a safety belt, unlawful speed in a school zone, and expired tags.

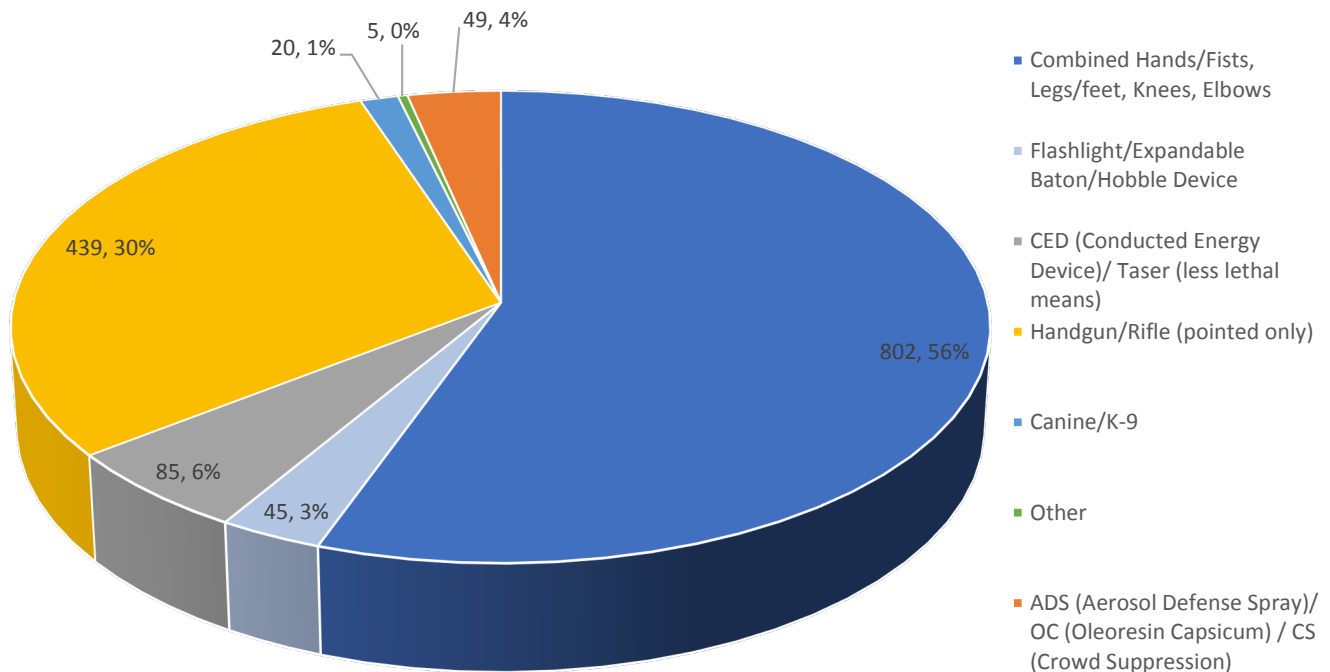


8,488 arrests were made in 2018 compared to 6,810 made in 2017 reflecting an increase of 25%. The top 5 charges were related to driving under the influence of drugs/alcohol charges, resisting an officer, larceny, and vehicle theft.

TYPES OF FORCE USED

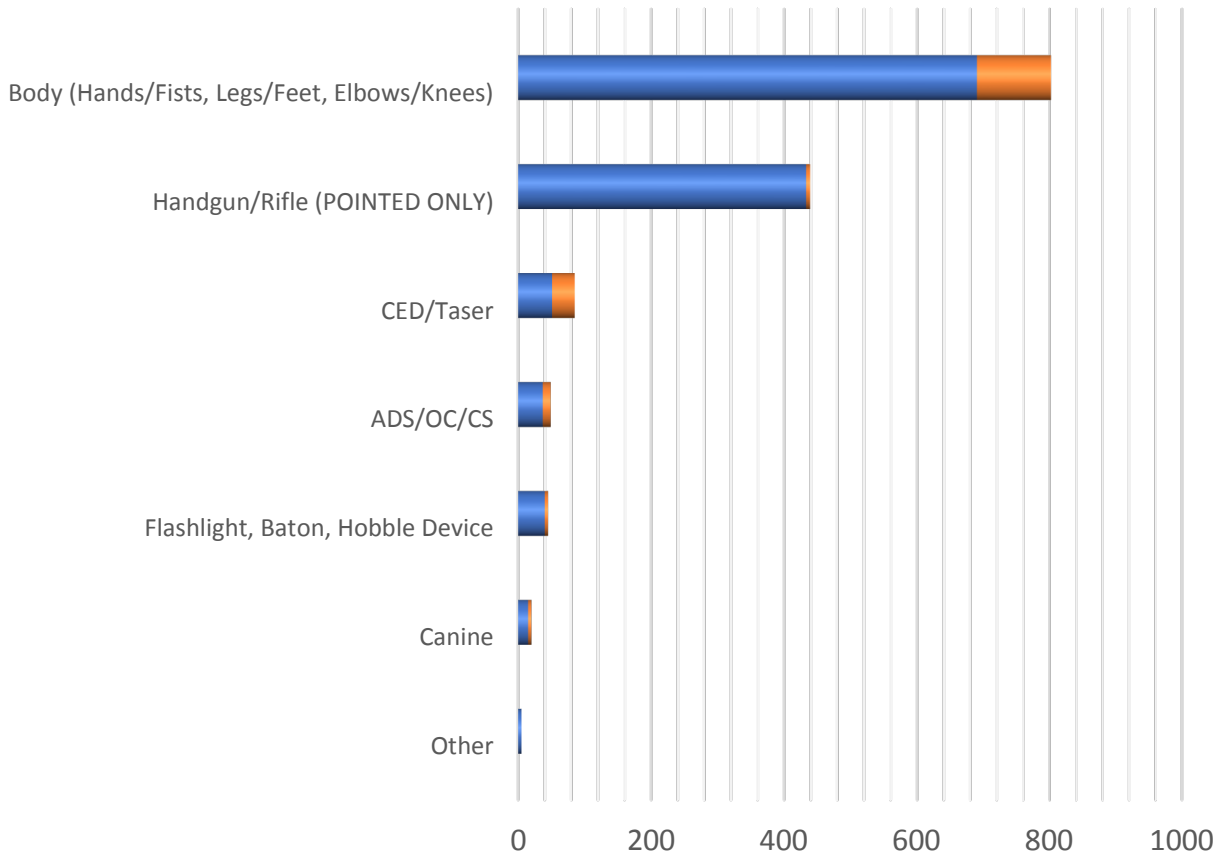


A total of 1,445 responses were used by officers when resistance was encountered. Hands, fists, legs, feet, knees, or elbows accounted for 56% of the responses used in 2018. When an officer encounters a situation in which an individual may bring harm to the officer, themselves, or others, the officer may have to use a firearm (handgun/rifle) to bring the subject under control; however, the firearm is pointed only. This type of force was used in 30% of responses.



TYPES OF FORCE USED

Response To Resistance Effectiveness



	Other	Canine	Flashlight, Baton, Hobble Device	ADS/OC/CS	CED/Taser	Handgun/Rifle (POINTED ONLY)	Body (Hands/Fists, Legs/Feet, Elbows/Knees)
■ Effective Number	5	15	40	37	51	433	690
■ Not Effective Number	0	5	5	12	34	6	112

Throughout the course of an officer’s duties, resistance may be encountered in many forms from verbal to physical. While officers are trained to de-escalate these types of situations, they may from time to time need to utilize one or more of the responses above. The use of hands/fists, legs/feet, elbows or knees, proved effective in bringing the subject under control in 48% of the 1,445 responses to resistance; however, this type of response was ineffective in 8% of the incidents. A total of 439 responses involved the use of a pointed handgun/rifle, which proved effective 99% of the time without the need for additional responses.



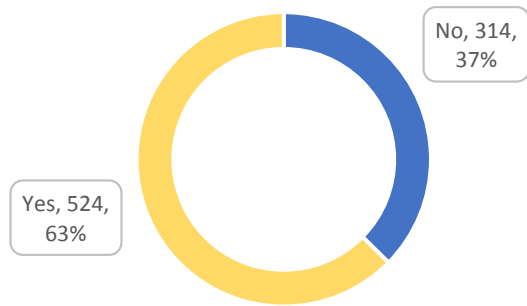
SWORN TO SERVE

LIVE TO PROTECT



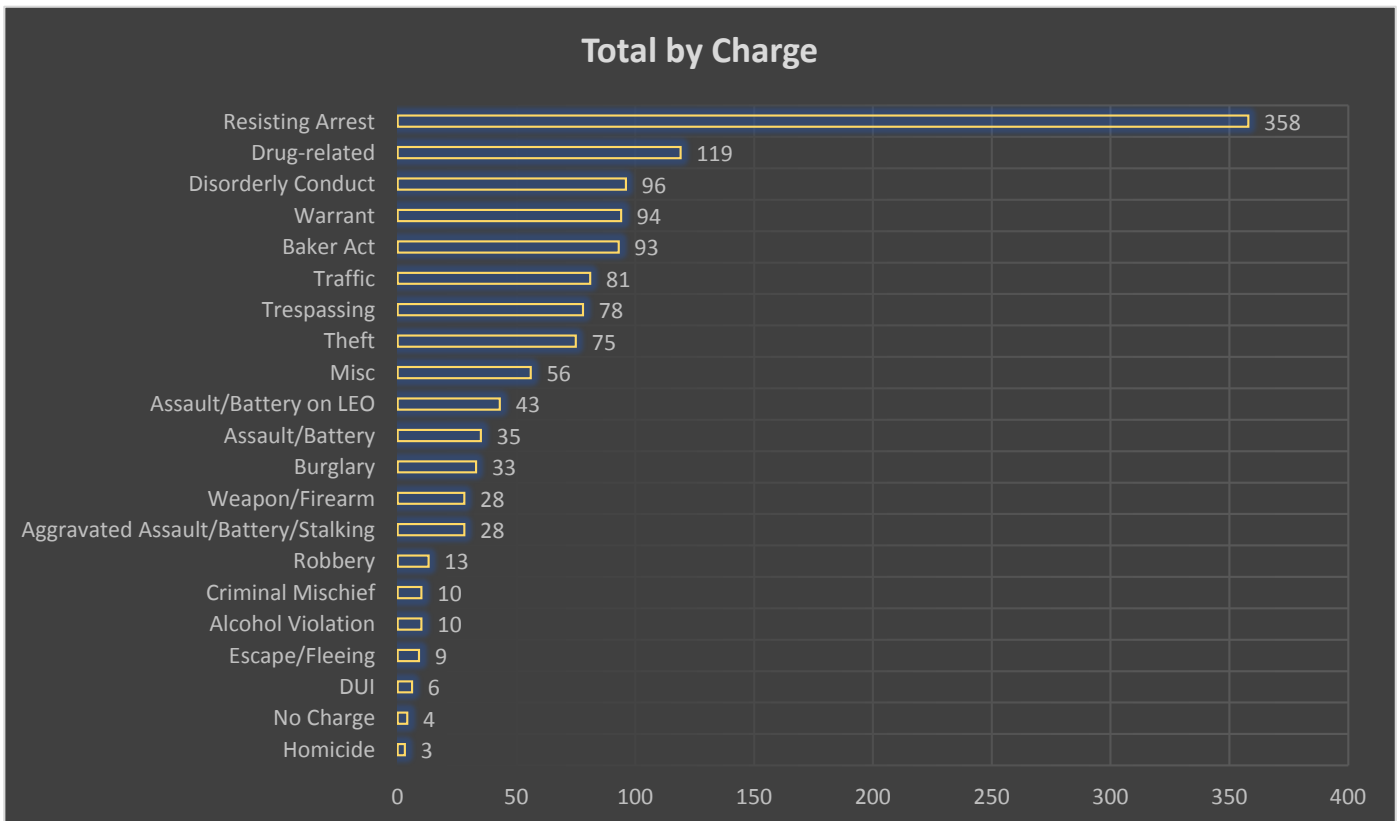
CHARGES DURING RESPONSE

Individuals Arrested in Conjunction With Use-of-Force



Individuals arrested in conjunction with the use of force made up 63% (524 individuals) while 37% (314 individuals) were not arrested. A total of 235 individuals were taken to the hospital in conjunction with the use of force; however, 121 were actually injured during the response. Additionally, officers reported injuries in 30 of the 838 response to resistance reports while 12 officers were taken to the hospital in conjunction with these incidents.

The graph below illustrates the charges filed for the 838 response to resistance reports generated by officers in 2018. In many of the incidents, multiple charges applied to the individual. The most frequent charge was resisting arrest making up 28% of all the charges. Nine percent of charges were drug related while disorderly conduct, warrants, and Baker acts accounted for 7% each.

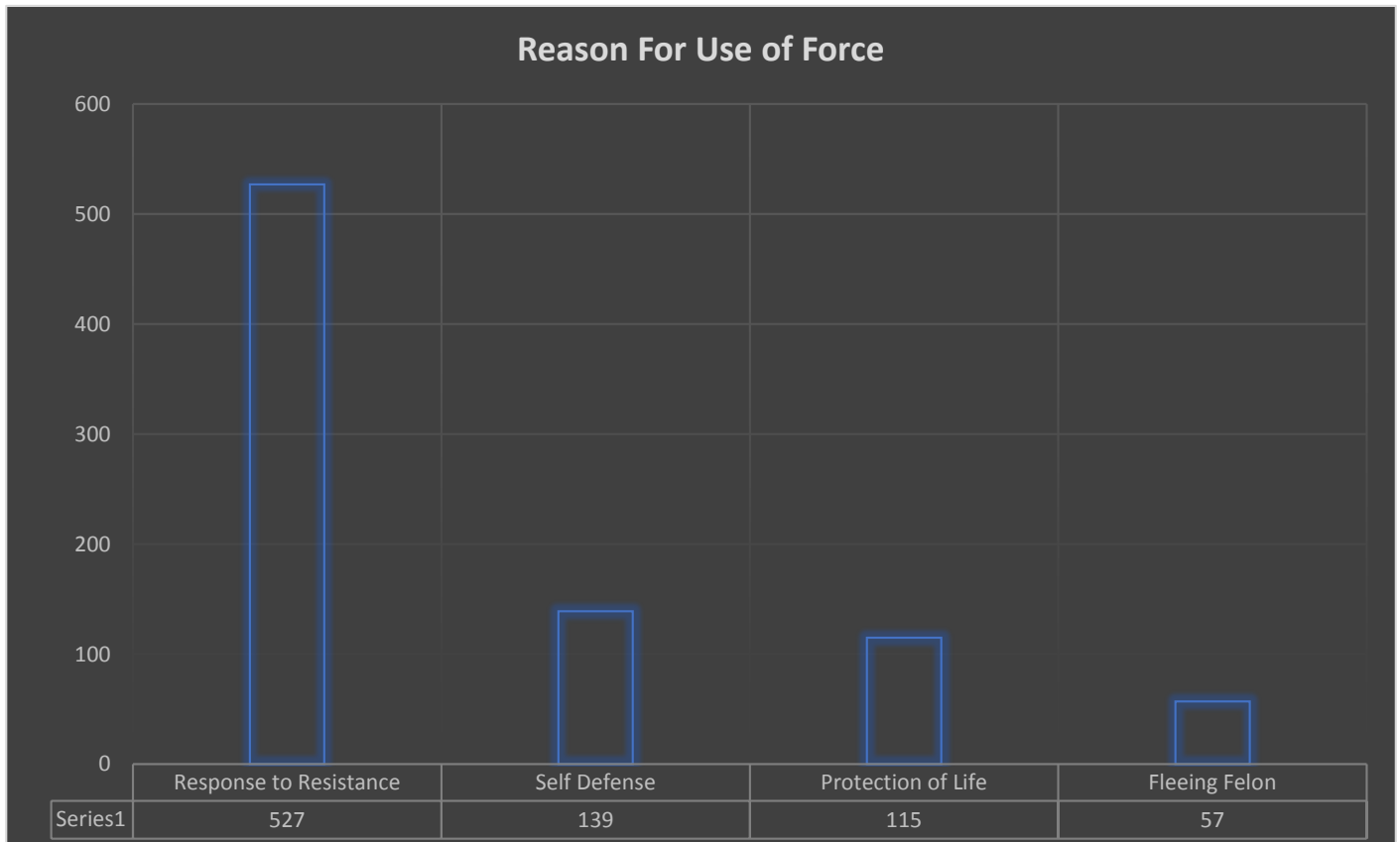


REASON FOR USE OF FORCE

When considering use of force, it is the policy of the Fort Lauderdale Police Department that members only respond to the level of resistance with a level of response necessary to effect lawful objectives. Three factors are used to determine if the response level is objectively reasonable:

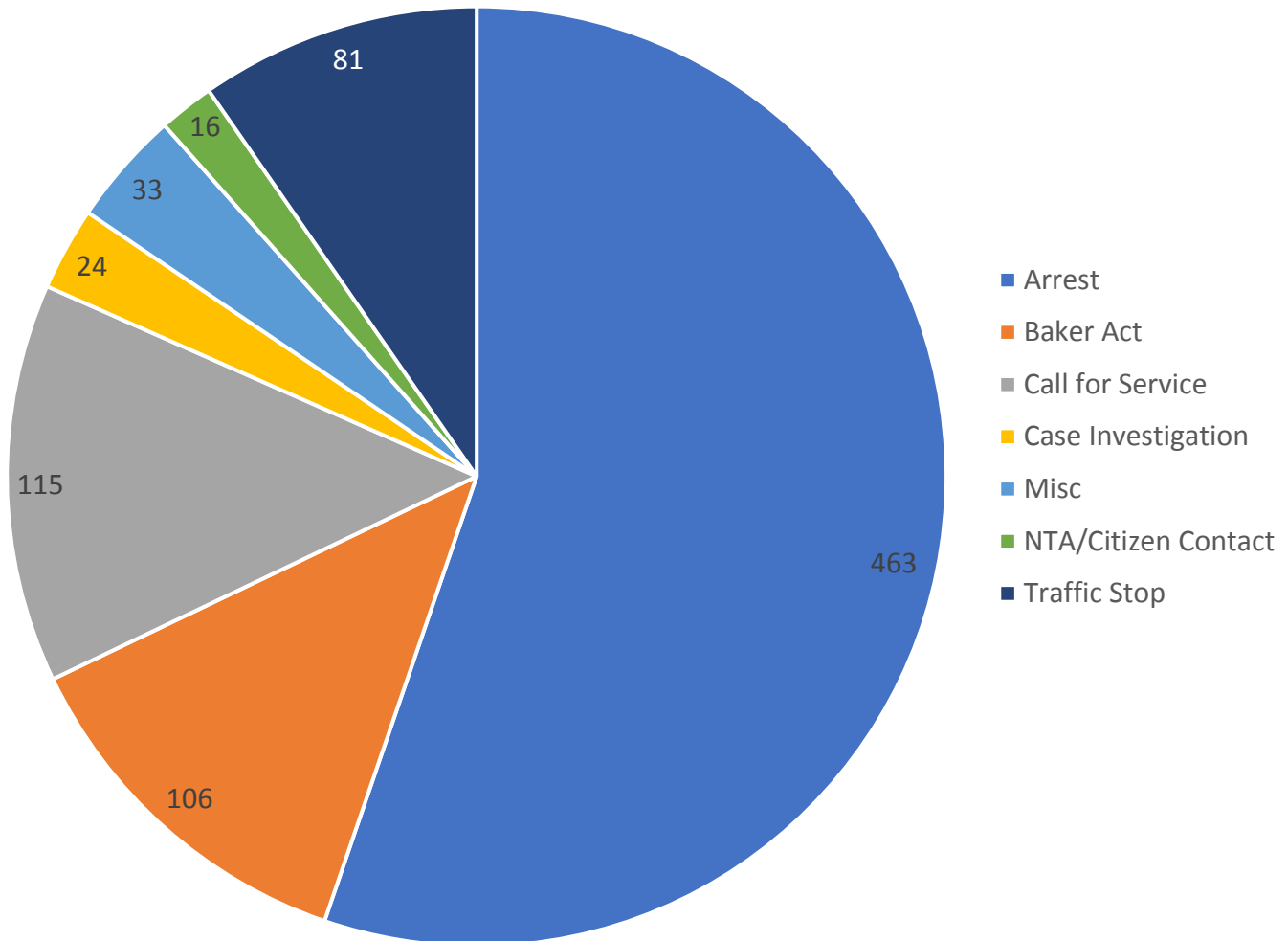
1. How serious is the suspected offense?
2. Is there a physical threat to the officer or anyone else?
3. Is the individual actively resisting or attempting to evade arrest by flight?

In 2018, the top reason for the use of force was for resistance encountered by the officer, making up 63% (527) of incidents. In 14% (115) of incidents, a physical threat to the officer or others (protection of life) deemed it necessary to use an appropriate level of force while 6% (57) of incidents attributed the use of force to an individual attempting to evade arrest by flight. In 17% (139) of incidents, the officer’s use of force was self defense.



SERVICES RENDERED

Services being rendered at the time of the response to resistance are illustrated in the graph below. An arrest was being made in 55% of the incidents requiring a response to resistance. In these incidents, the individual displayed a level of resistance during the arrest causing the officer to use an appropriate level of force. In 14% of the incidents, the officer(s) was responding to a call for service when resistance was encountered from an involved individual. Baker acts accounted for 13% of the services being provided when a response to resistance was utilized. Traffic stops, case investigations, and citizen contacts made up 10%, 3%, and 1%, respectively. Miscellaneous responses included searches, pursuits, crowd control, injury preventions, assisting other agencies, felony stops, and unknown services, which made up a combined 4%.



MAKING A COMPLAINT

How do I make a complaint?

Complaints can be made in person, via telephone, or by e-mail directly to the Office of Internal Affairs (IA) or any Department employee. Complaints concerning discourtesy, or inadequate services will generally be forwarded to the employee's command for investigation. The investigation will then be thoroughly reviewed by IA. Complaints concerning unnecessary or excessive force, false arrests, and complaints that are criminal in nature will be retained by IA for investigation. In most situations, a sworn, taped statement will be requested. Remember to simply relay the facts and do not attempt to embellish your complaint. Be prepared to provide the investigator with witness information. You will be treated professionally and with courtesy.

All complaints will be thoroughly examined. There are four possible dispositions:

- **Not Sustained** – There is insufficient evidence to confirm or refute the complaint.
- **Sustained** – The allegation is true. The actions of our employee was inconsistent with the agency's policy.
- **Exonerated** – The allegation is true, however, the action of our employee was justified and/or consistent with the agency's policy.
- **Unfounded** – The allegation is either false or there is no credible evidence to support it.

All decisions involving disciplinary action will be made in conjunction with the City's Labor Relations Office and the City Manager's Office. Complaints that involve a possible criminal violation are sent to the Broward County State Attorney's Office for review. Once these processes are complete, select cases are sent to the Citizen's Police Review Board for their review and recommendation.



Mailing Address:

Fort Lauderdale Police Department
Office of Internal Affairs
1300 West Broward Boulevard
Fort Lauderdale, FL 33312

Office Location:

255 NE 3 Ave
Fort Lauderdale, FL 33301

Office Hours:

Monday- Friday 8AM-4PM

Complaint Line:

(954) 828-6956

Email:

InternalAffairs@fortlauderdale.gov



CALL
911

FORT LAUDERDALE
POLICE
"WE BUILD COMMUNITY"

10598

2019 Run/Walkathon

Run Sponsors
GOLD W
INVESTMENT SERVICES BENTZ

Jog Sponsors
BERGER NATIONAL MARINE

Walk Sponsors
MON
PIECES OF
DAL FOX

6

9

8

3

4

2

1

SENIOR STAFF



Karen Dietrich
Assistant Chief
Support Services Bureau



Douglas MacDougall
Assistant Chief
Operations Bureau



Luis Alvarez
Assistant Chief
Investigations Bureau



Francis Sousa
Major
Support Services



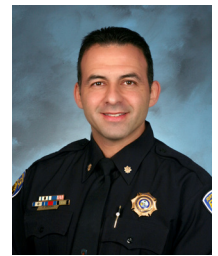
Dana Swisher
Major
Operations
Patrol Division



Gregory Salters
Major
Operations
Support Division



Victor London
Major
Internal Affairs



Eric Brogna
Major
Investigations
Bureau

CITY COMMISSION

Dean J. Trantalis
Mayor

Heather Moraitis
Commissioner – District 1

Steven Glassman
Commissioner – District 2

Robert L. McKinzie
Commissioner – District 3

Ben Sorensen
Commissioner – District 4

Chris Lagerbloom
City Manager

Alain E. Boileau
City Attorney

John Herbst
City Auditor

Jeffrey A. Modarelli
City Clerk





Fort Lauderdale Police Department
1300 W. Broward Boulevard
Fort Lauderdale, FL 33312
www.flpd.org

