

**U.S. Coast Guard – Seventh Coast Guard District
Center for Interagency Maritime Intelligence
Document and Media Exploitation
Digital Forensic GPS Analysis Report**



Case Number: 041 2012

Date: June 22, 2012

**U.S. Coast Guard – Seventh Coast Guard District
Center for Interagency Maritime Intelligence
Document and Media Exploitation
Digital Forensic GPS Analysis Report**

Electronic Device Analysis Report

Requesting Agent and Agency: Homicide Detective, FLPD

Device: Garmin GPSMap 5212 S/N 159013235 and S/N 159013140

D7 Case Number: 041 2012

Synopsis

On June 22, 2012, the USCG D7 (di) Document and Media Exploitation Team (DOMEX), was contacted by Fort Lauderdale Police Department Homicide Division requesting the exploitation of a Garmin GPSMap 5212 S/N 159013140 and a Garmin GPSMap 5212 S/N 159013235. The two GPS units were connected on the same vessel and the data analyzed in this product is from the Garmin GPSMap 5212 S/N 159013140. Data is to be used to try to establish location where an individual may have fallen overboard. All requested data was successfully extracted from the GPS system. The following analysis is provided.

Track Logs – 07

Waypoints – 43

Routes – 00

Standard GPS Terminology

There are four types of data that are consistently available across almost all GPS devices. These data types can be divided into two categories; system level information and user inputted data.

System Level

- **Track Log:** The track log is a complete list of track points that the unit has created. This track log is created such that if the user wants to retrace his/her steps, the user may perform a trackback. The unit will then navigate the user from point to point in the track log to take the user back to the starting location.
- **Track point:** A track point is a location stored by the unit as a record of where the GPS has been. When the GPS unit is turned on, and has acquired satellites, it will begin to record an electronic breadcrumb trail. The track points are created automatically by the unit and cannot be changed by the user. The unit, by default, automatically decides how often to create track points. The user may also program the device to create track points based on a specific time or distance interval.

Standard GPS Terminology

User Level

- **Waypoint:** a waypoint is a location that the user stores in the GPS. This location can be a point where the user was physically present and wanted to save, or it can be a location that the user programs into the device from the coordinates, or an address, or selects a point of interest (POI) to which they want to navigate in the future.
- **Route:** A route is a series of waypoints that the user wants the unit to navigate in a specific order. The advantage of using a route is that upon arrival at the intermediary waypoint, the unit automatically starts navigating the user to the next waypoint in the route.

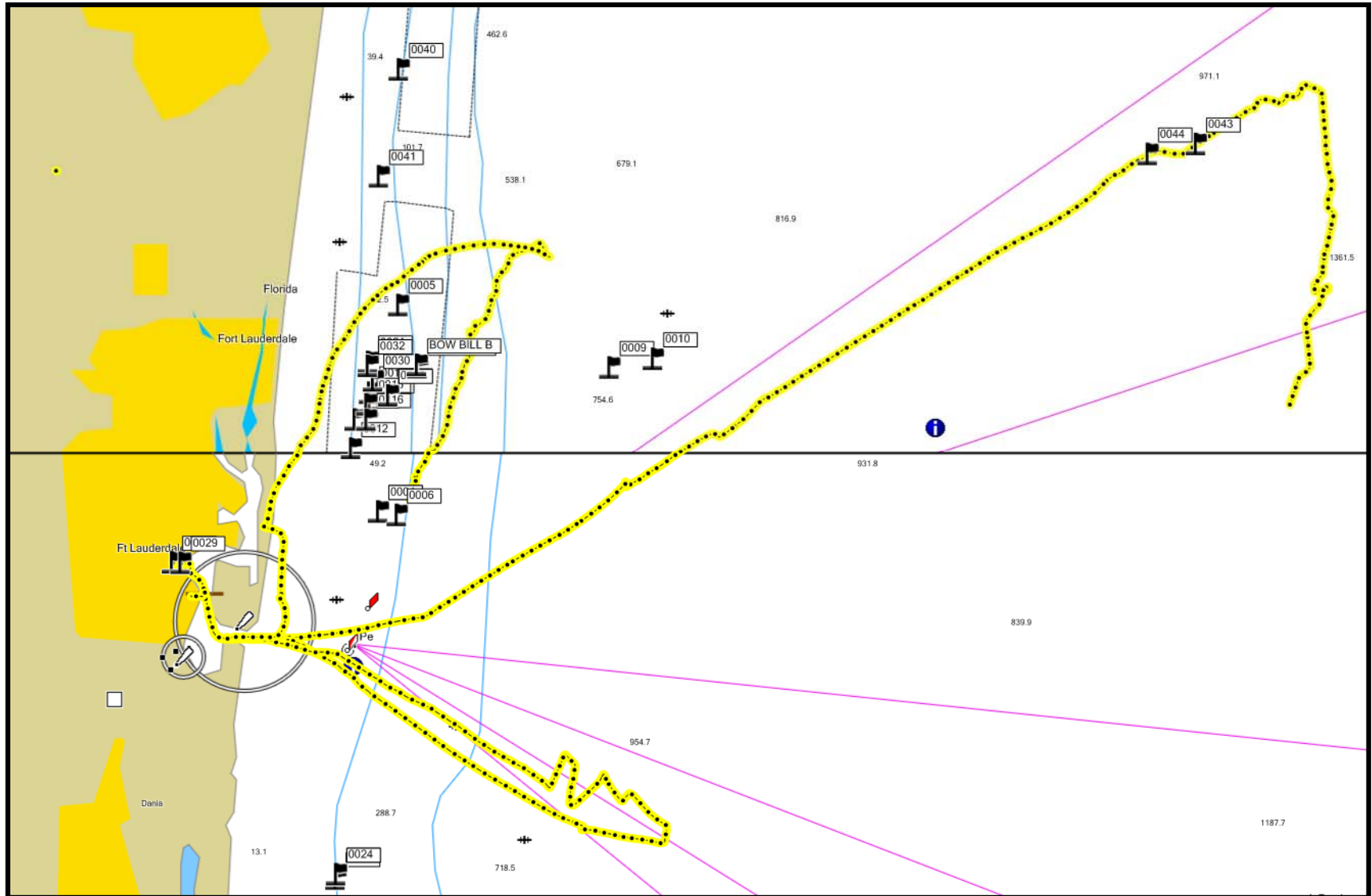
Generally speaking, system level information such as track points can be used to prove actions, as they show where the device has been. User data such as waypoints can be used to show intent, as they are entered by the user.

Garmin GPSmap 5212 Track Log (07 Total)

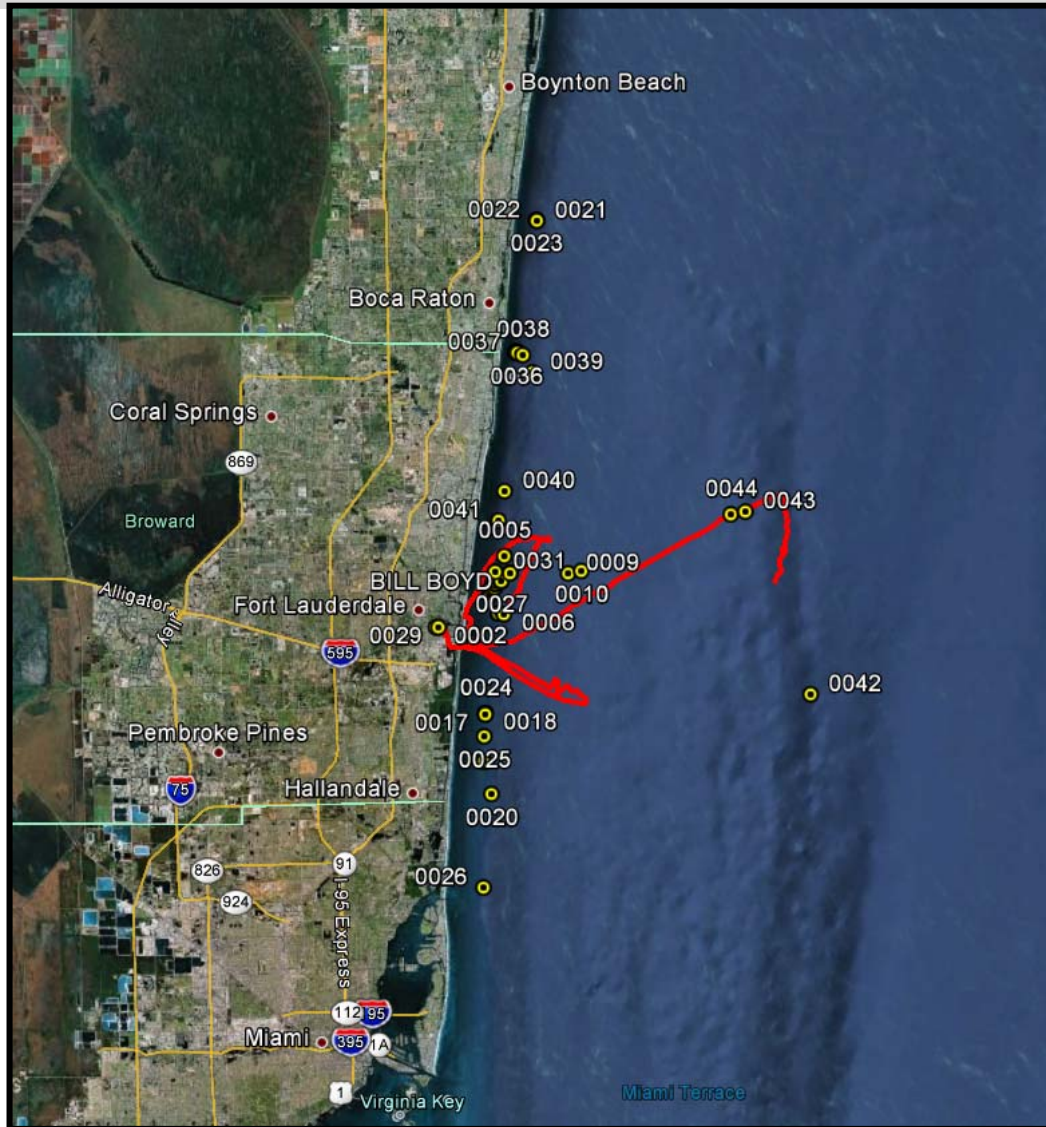
Name	Points	Date	Elapsed Time	Length	Area	AVG Speed
ACTIVE LOG	3498	6/15/2012 10:44	2:23:43	27.2 mi	22.3 sq mi	11 mph
ACTIVE LOG 001	4	6/16/2012 10:29	0:00:23	117 ft	243 sq ft	3 mph
ACTIVE LOG 002	796	6/16/2012 10:29	3:05:48	20.7 mi	2.3 sq mi	7 mph
ACTIVE LOG 003	5499	6/19/2012 19:29	11:19:23	16.7 mi	7.3 sq mi	1.5 mph
ACTIVE LOG 004	2	6/20/2012 8:49	0:25:30	1 ft	0 sq ft	0.0 mph
ACTIVE LOG 005	1	6/22/2012 13:26	0:00:00	0 ft	0 sq ft	
ACTIVE LOG 006	199	6/22/2012 13:26	0:04:39	0 ft	0 sq ft	0 mph

Active Logs 005 and 006 are of no relevance to the case. These track logs occurred when DOMEX powered on the GPS to place it in "Simulator Mode".

Map Source view of all track data in Garmin GPSMap 5212c

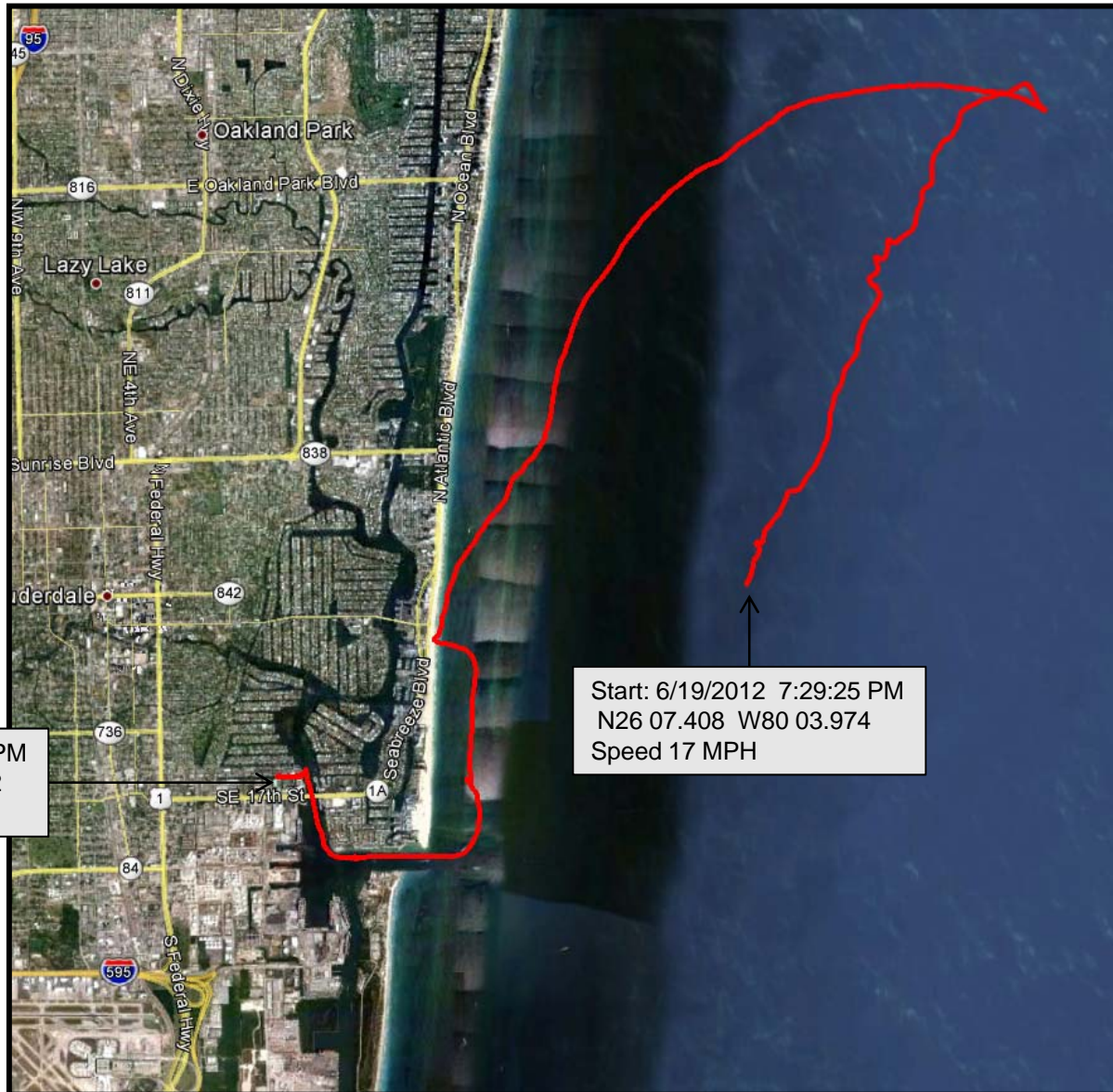


Google Earth view of all data in the Garmin GPSMap 5212



Tracks: Red
Waypoints Yellow/White

Google Earth view of tracks in Garmin GPSMap 5212 for 6/19/2012



Tracks: Red

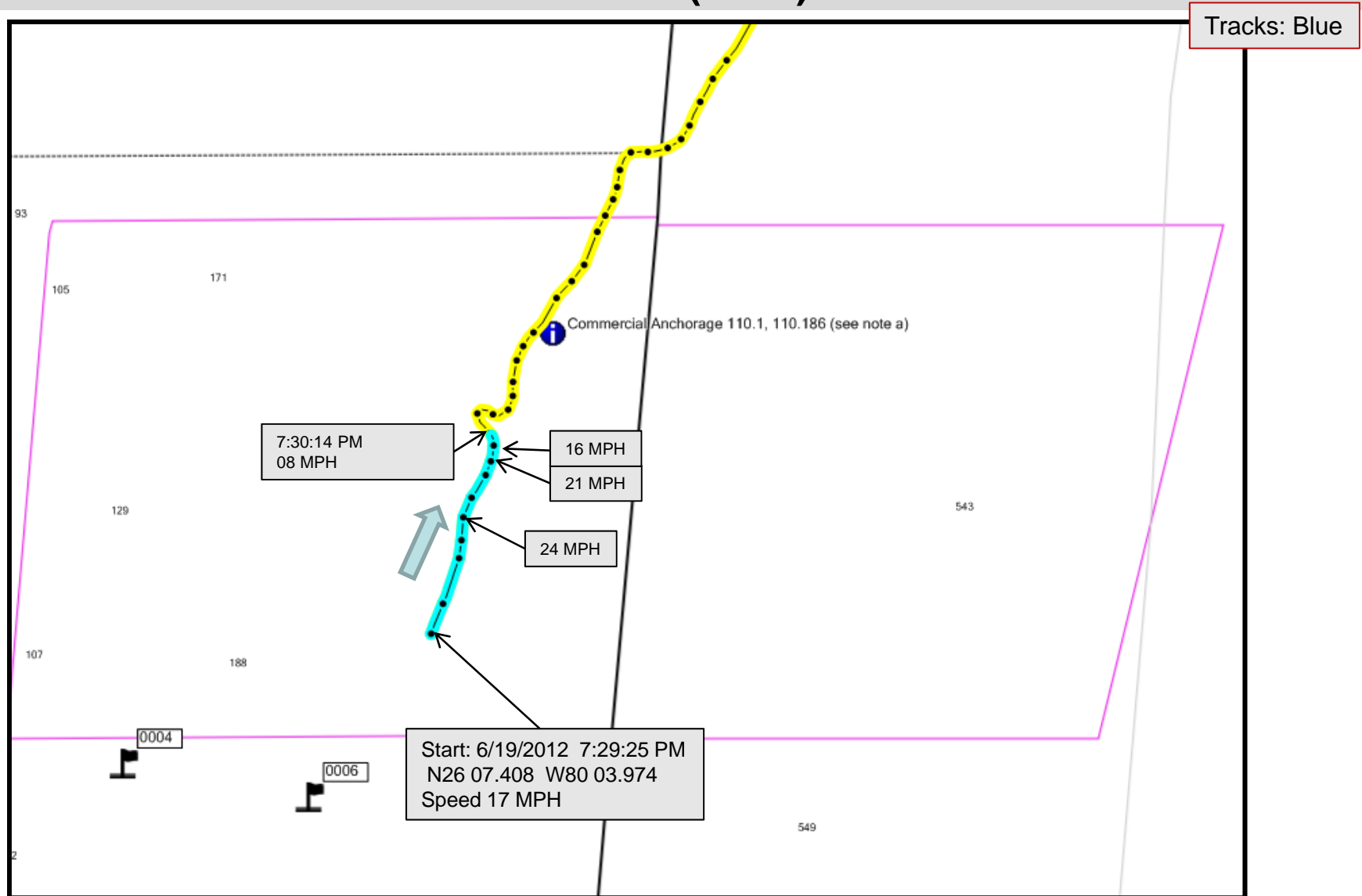
Start: 6/19/2012 7:29:25 PM
N26 07.408 W80 03.974
Speed 17 MPH

End: 6/19/2012 7:29:25 PM
N26 06.201 W80 07.192
Speed 00 MPH

Google Earth view of tracks in Garmin GPSMap 5212 for 6/19/2012 (End)

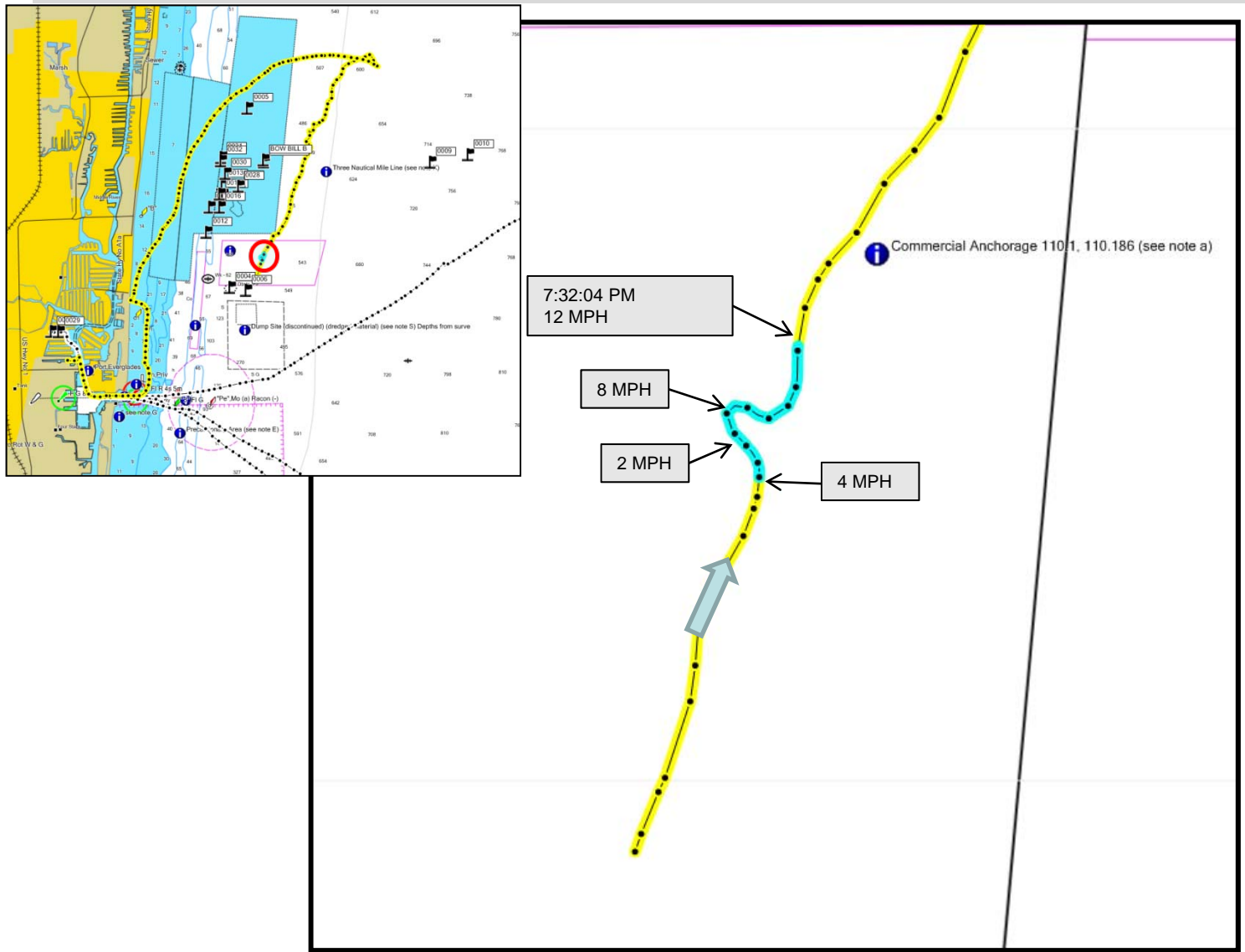


Detailed Map Source view of the data in Garmin GPSMap 5212 for 6/19/2012 (Start)

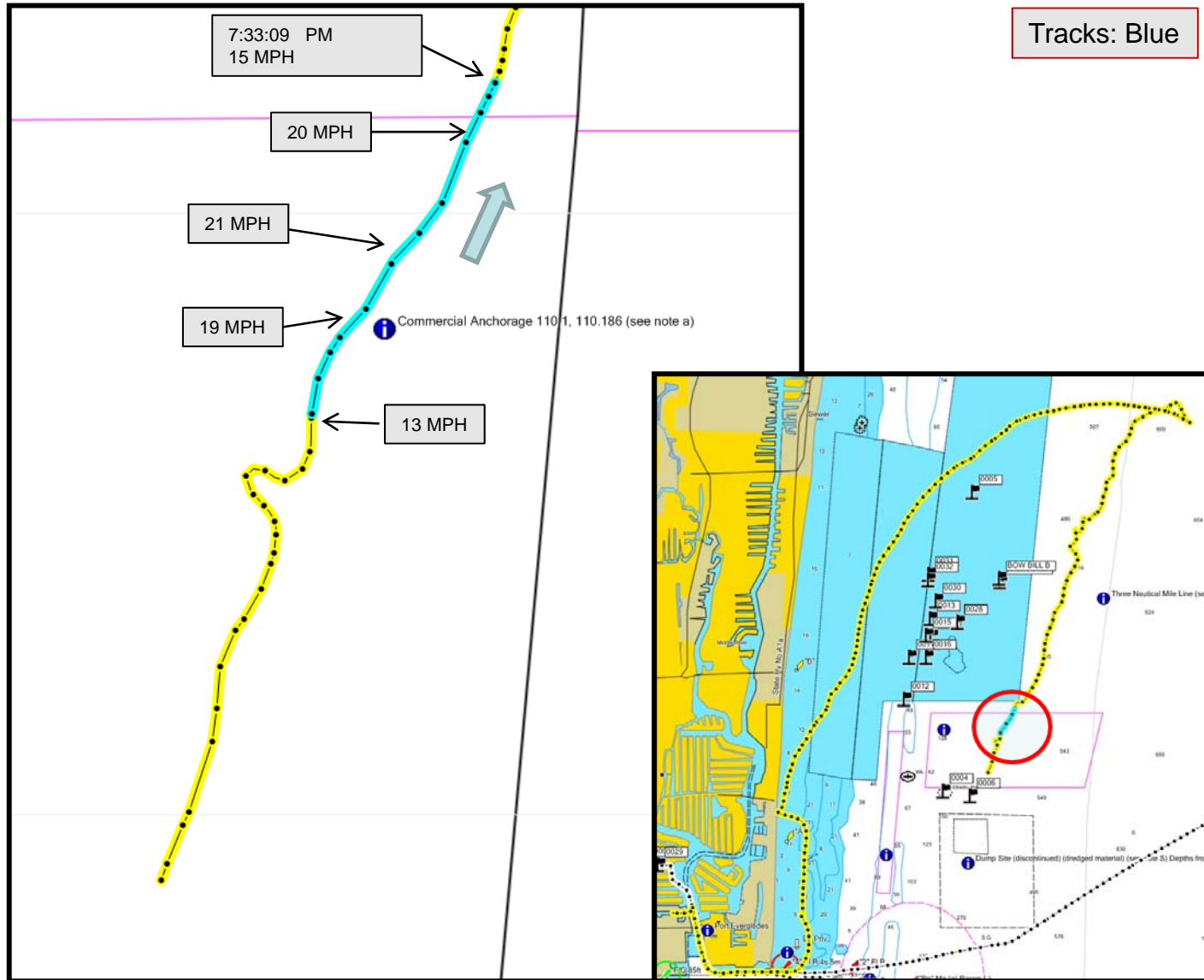


Detailed Map Source view of the data in Garmin GPSMap 5212 for 6/19/2012

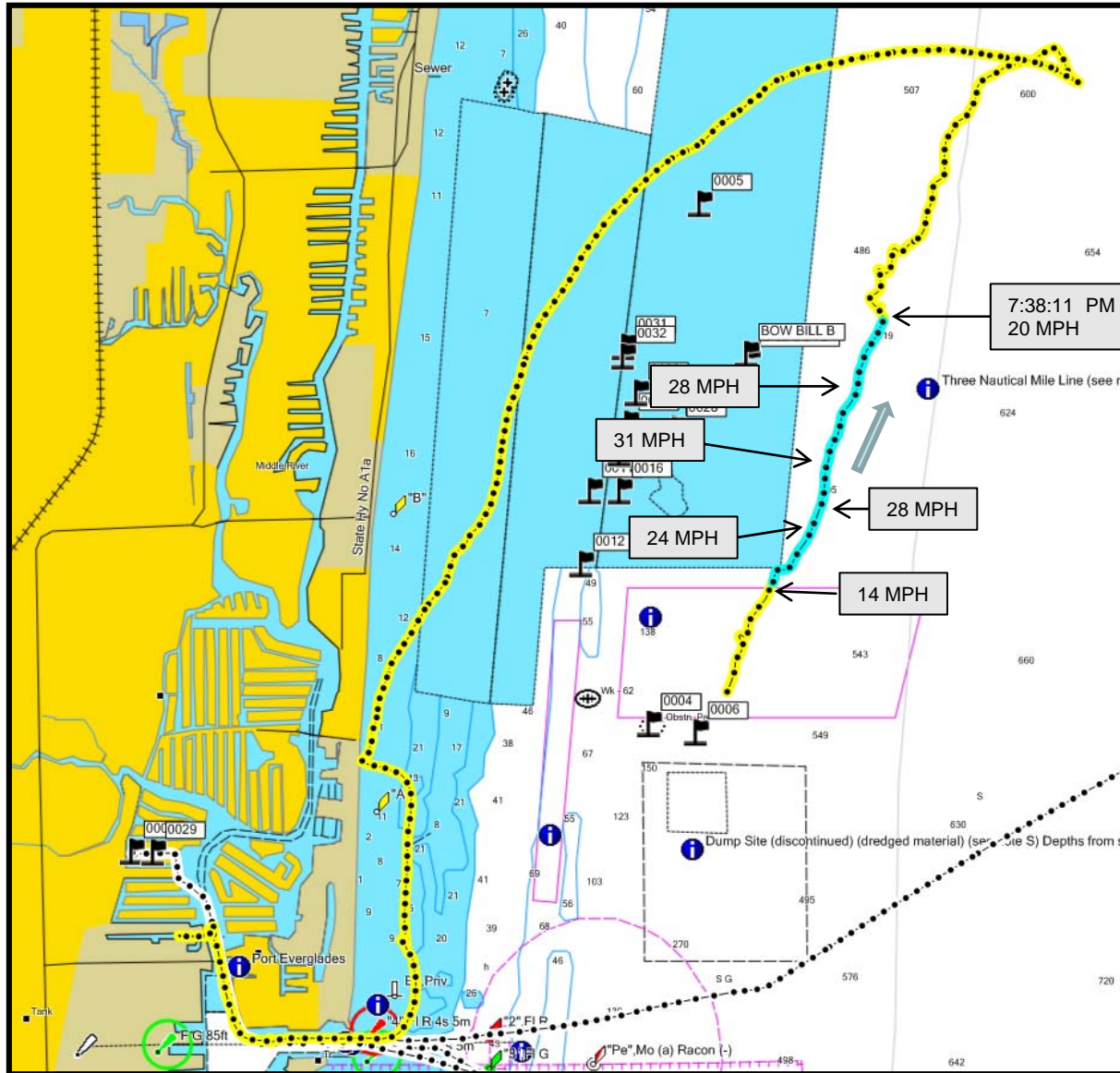
Tracks: Blue



Detailed Map Source view of the data in Garmin GPSMap 5212 for 6/19/2012



Detailed Map Source view of the data in Garmin GPSMap 5212 for 6/19/2012



Tracks: Blue

7:38:11 PM
20 MPH

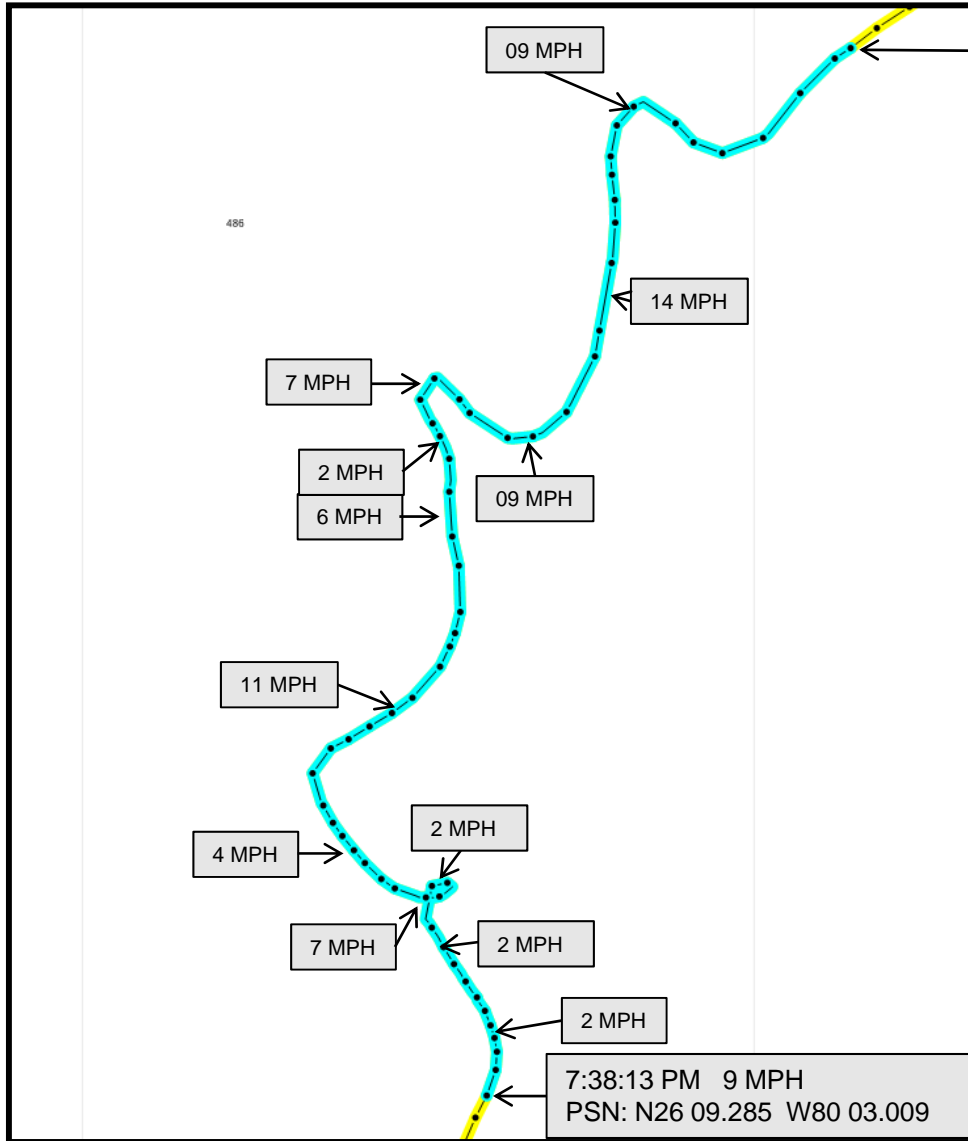
28 MPH

31 MPH

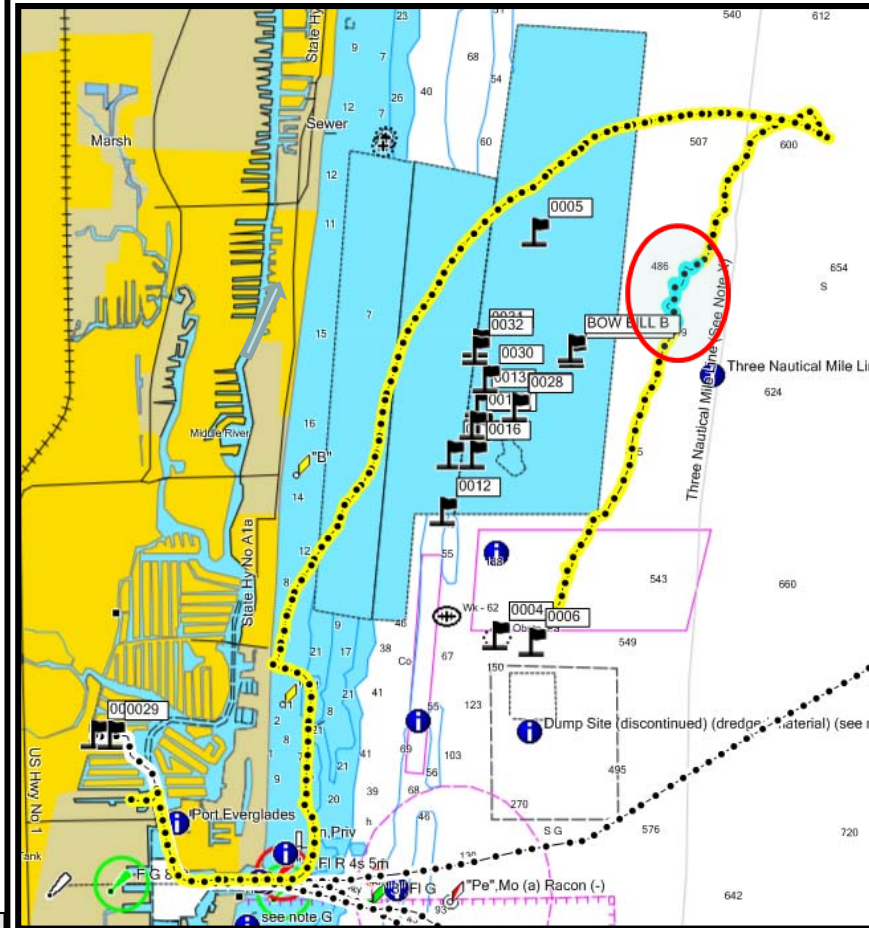
24 MPH

14 MPH

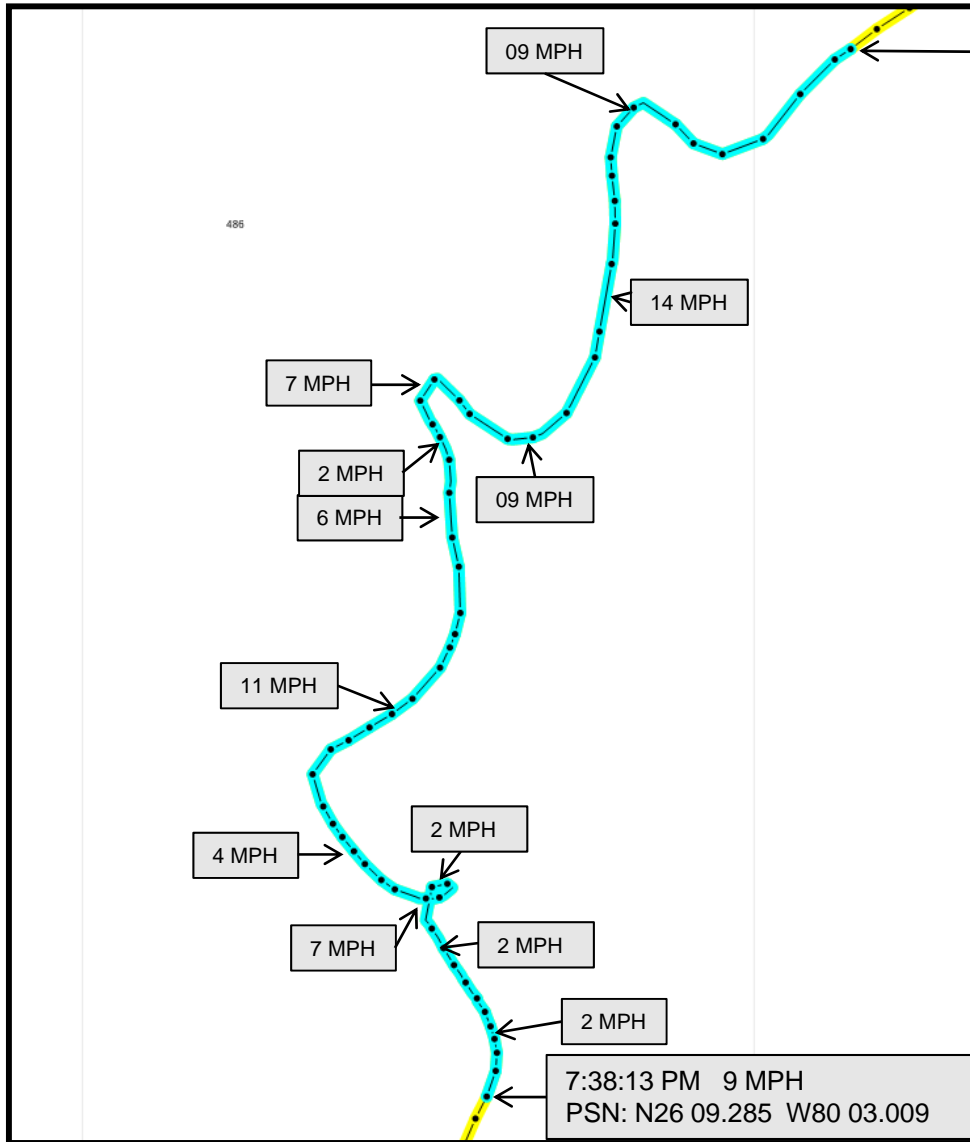
Detailed Map Source view of the data in Garmin GPSMap 5212 for 6/19/2012



Tracks: Blue



Detailed Map Source view of the data in Garmin GPSMap 5212 for 6/19/2012

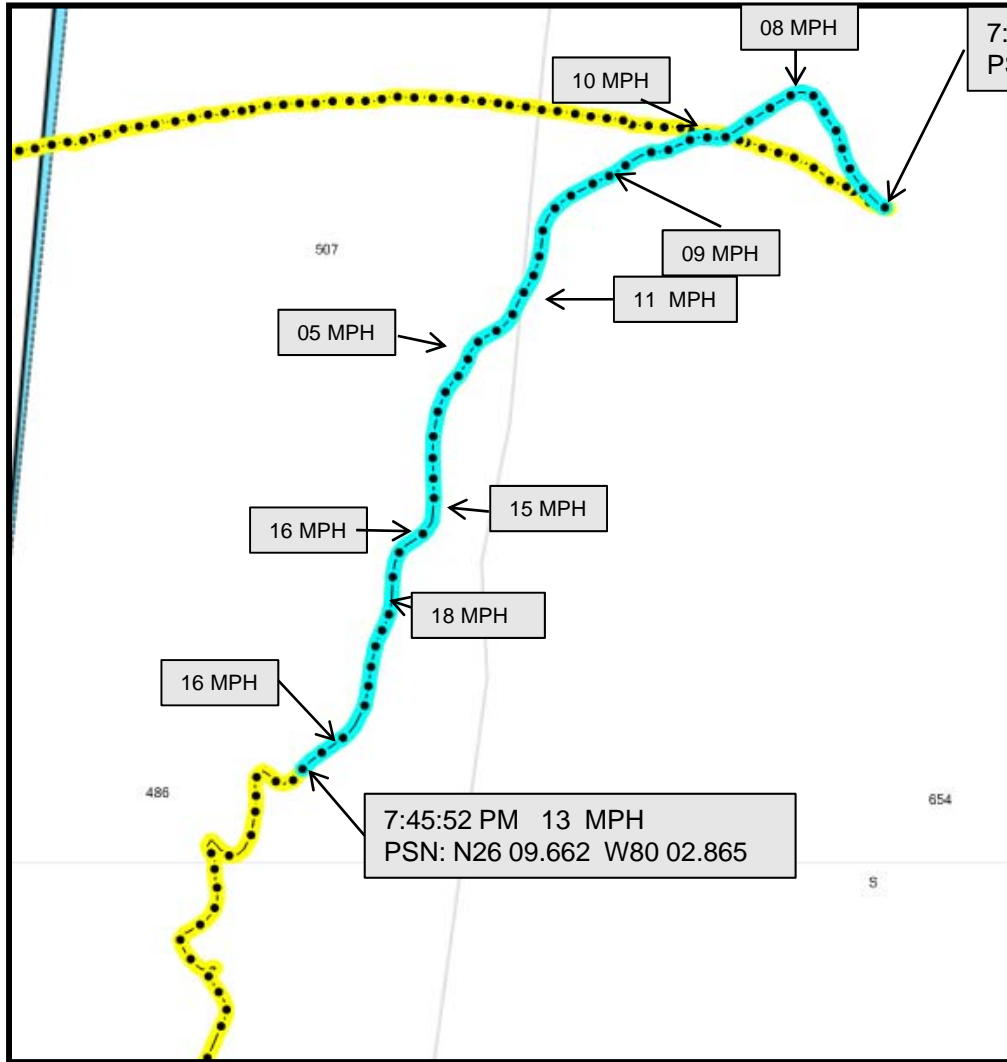


7:45:58 PM 16 MPH
PSN: N26 09.675 W80 02.849

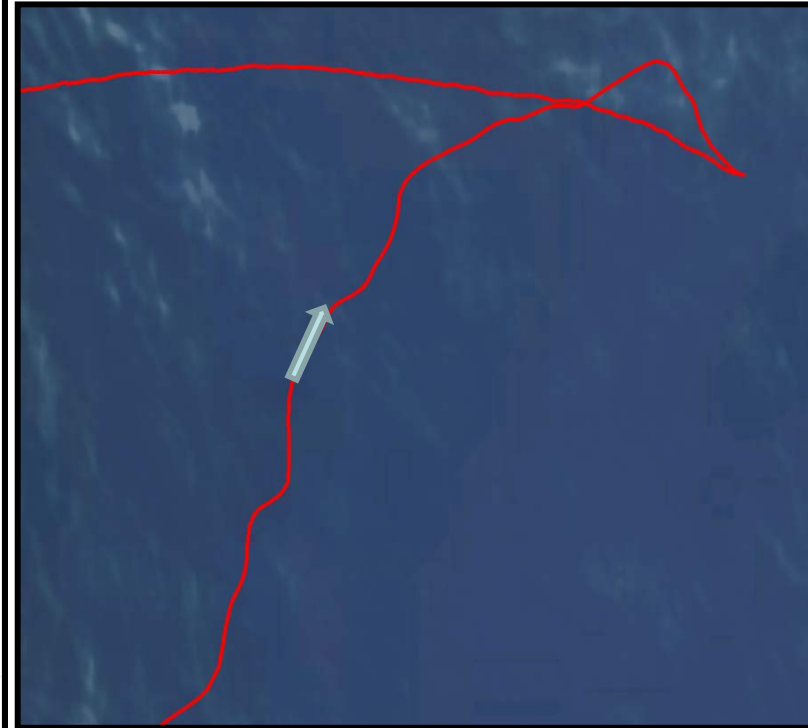
Tracks: Blue



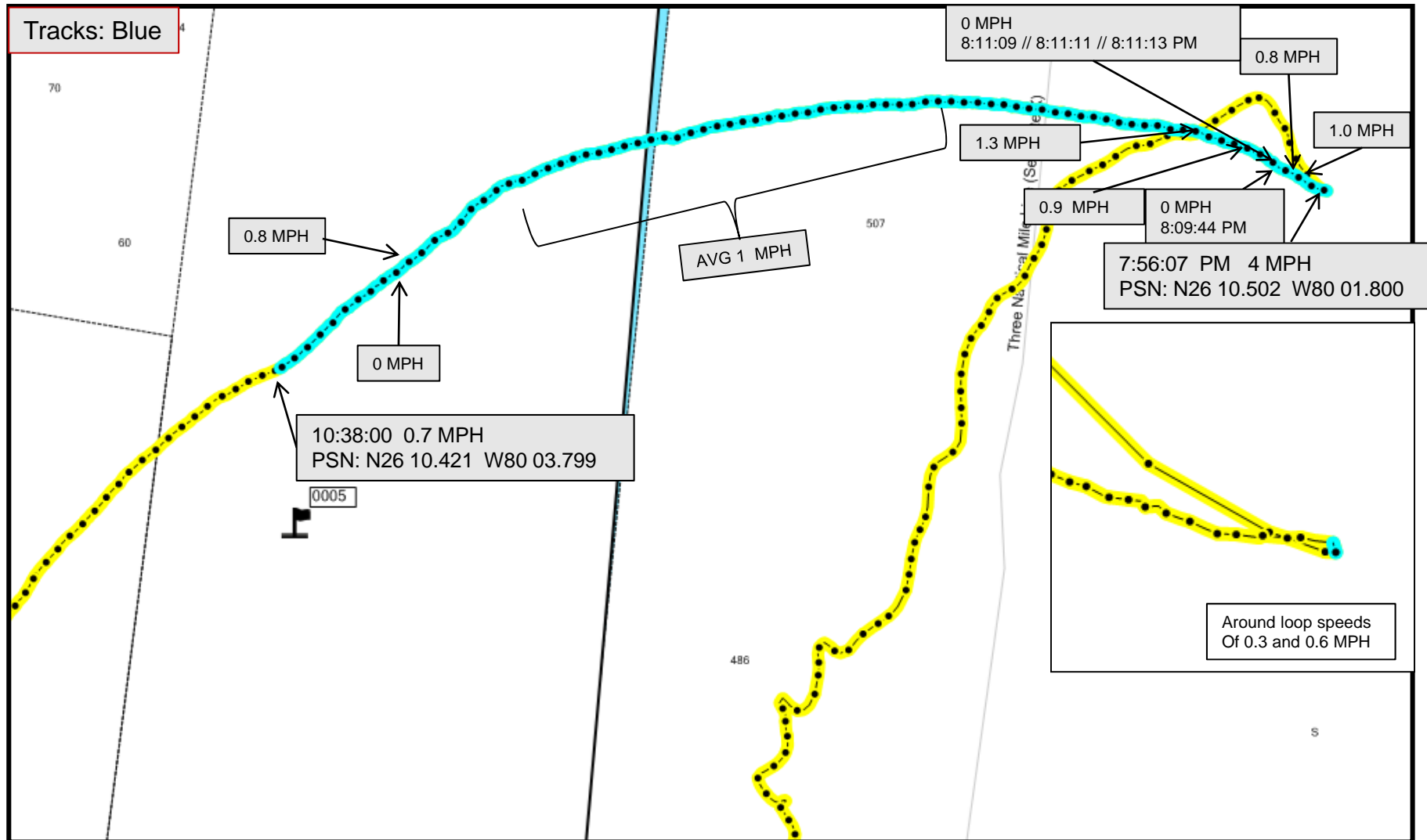
Detailed Map Source view of the data in Garmin GPSMap 5212 for
6/19/2012



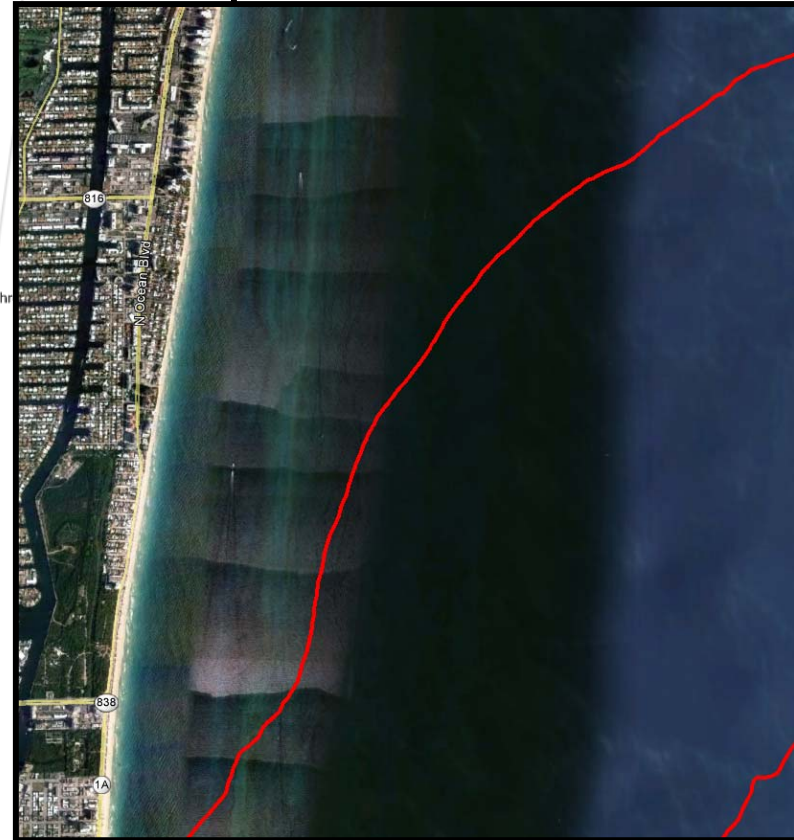
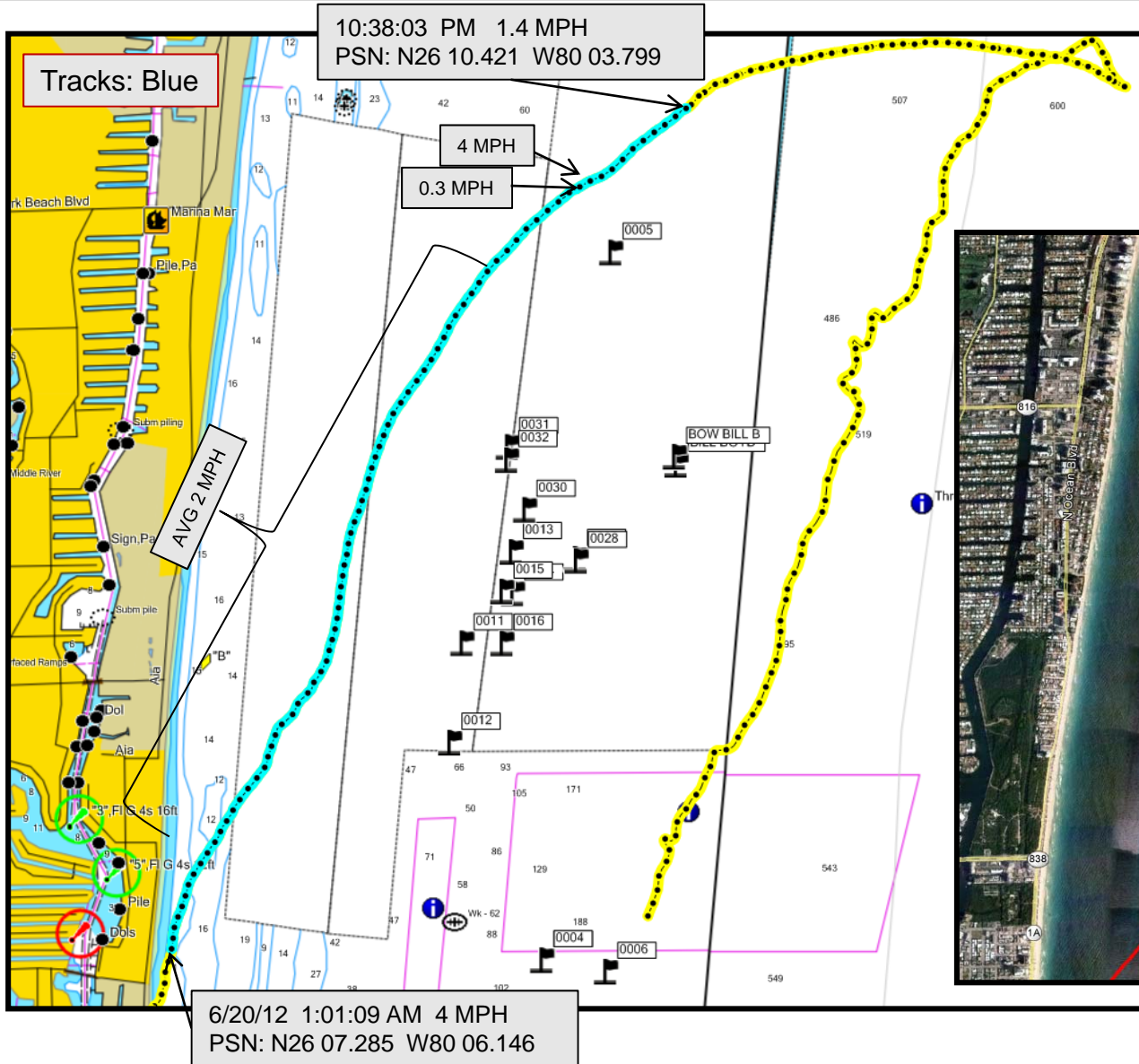
Tracks: Blue



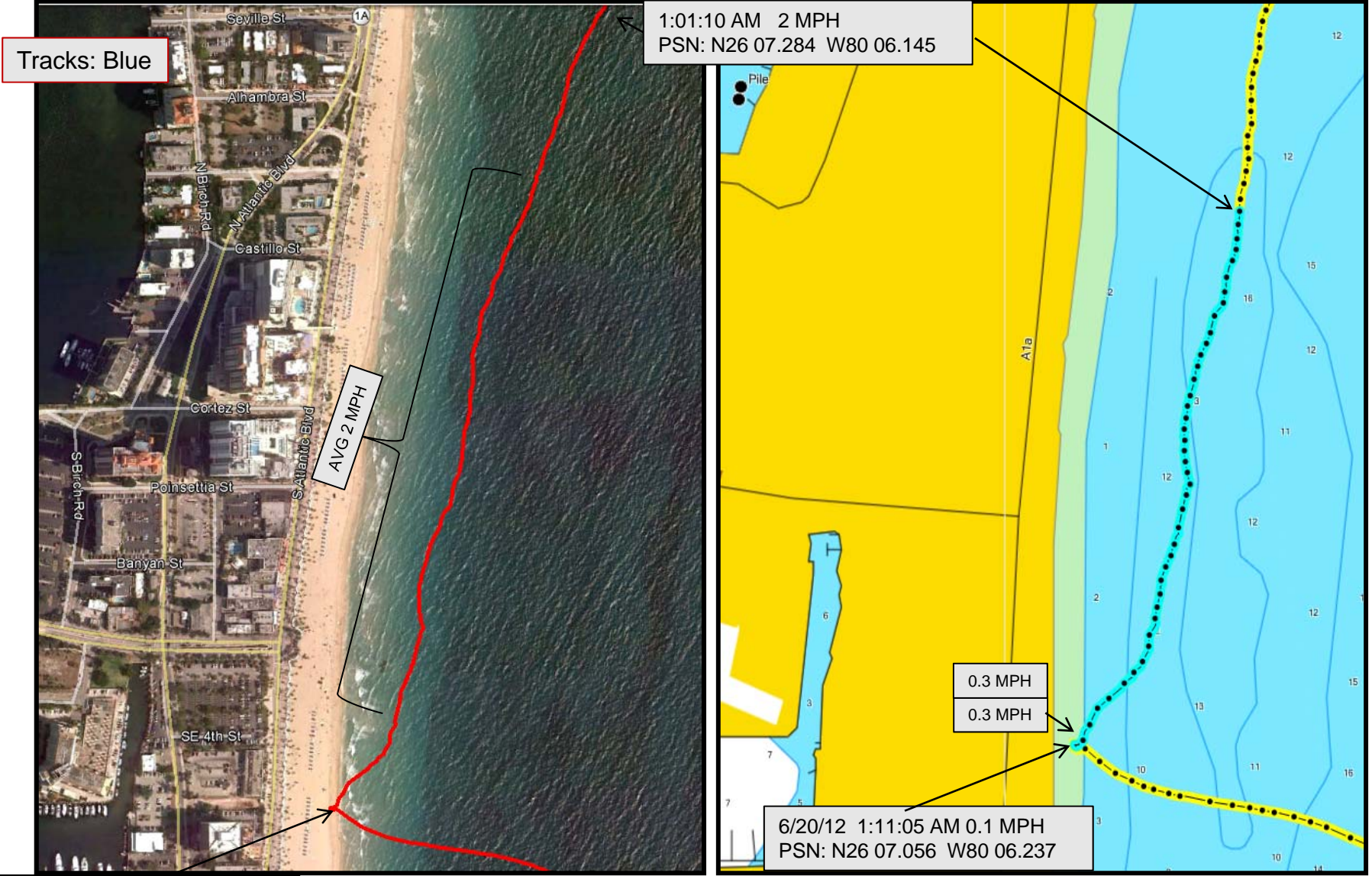
Detailed Map Source view of the data in Garmin GPSMap 5212 for 6/19/2012



Map Source view of the data in Garmin GPSMap 5212 for 6/19-20/2012

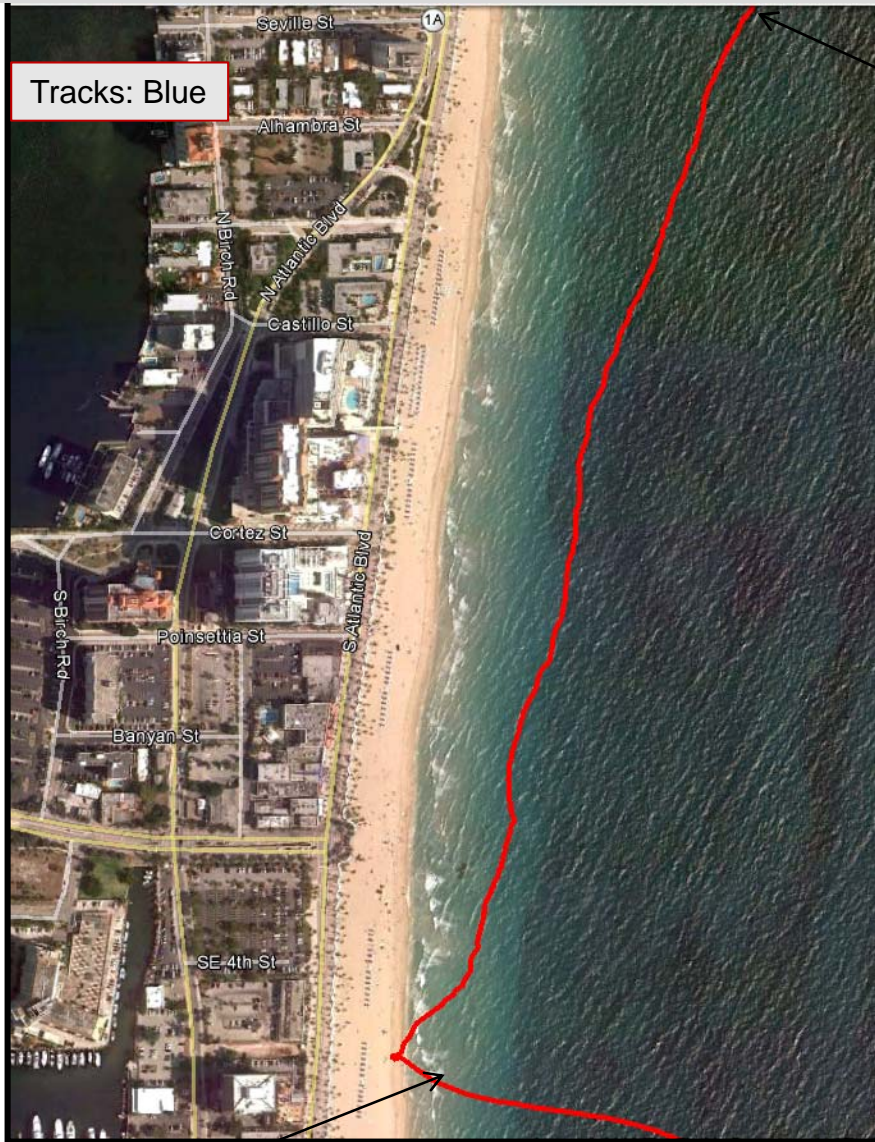


View of the data in Garmin GPSMap 5212 for 6/20/2012



6/20/12 1:11:05 AM 0.1 MPH
PSN: N26 07.056 W80 06.237

View of the data in Garmin GPSMap 5212 for 6/20/2012

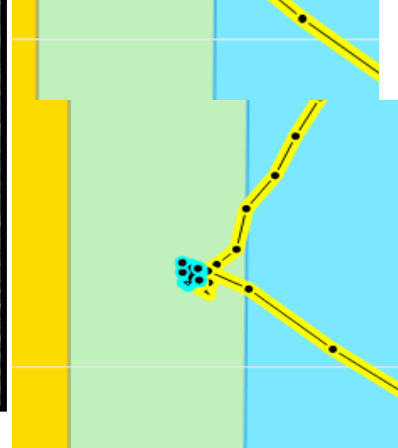


Tracks: Blue

1:10:04 AM 1.1 MPH
PSN: N26 07.058 W80 06.232
Landed at beach



1:12:05 AM 0 MPH
PSN: N26 07.055 W80 06.235



6/20/12 1:12:05 AM to 5:54:09 AM
Average speed is 0 MPH
PSN: N26 07.056 W80 06.237

6/20/12 1:11:05 AM 0.1 MPH
PSN: N26 07.056 W80 06.237

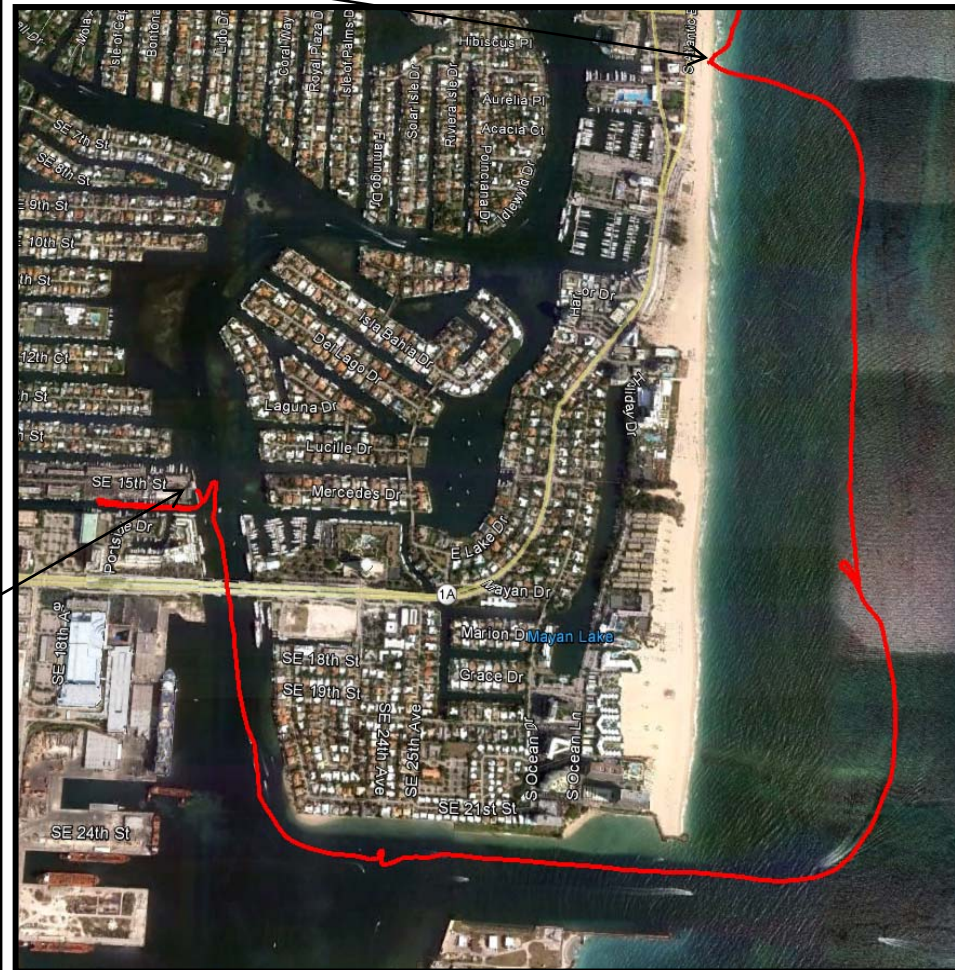
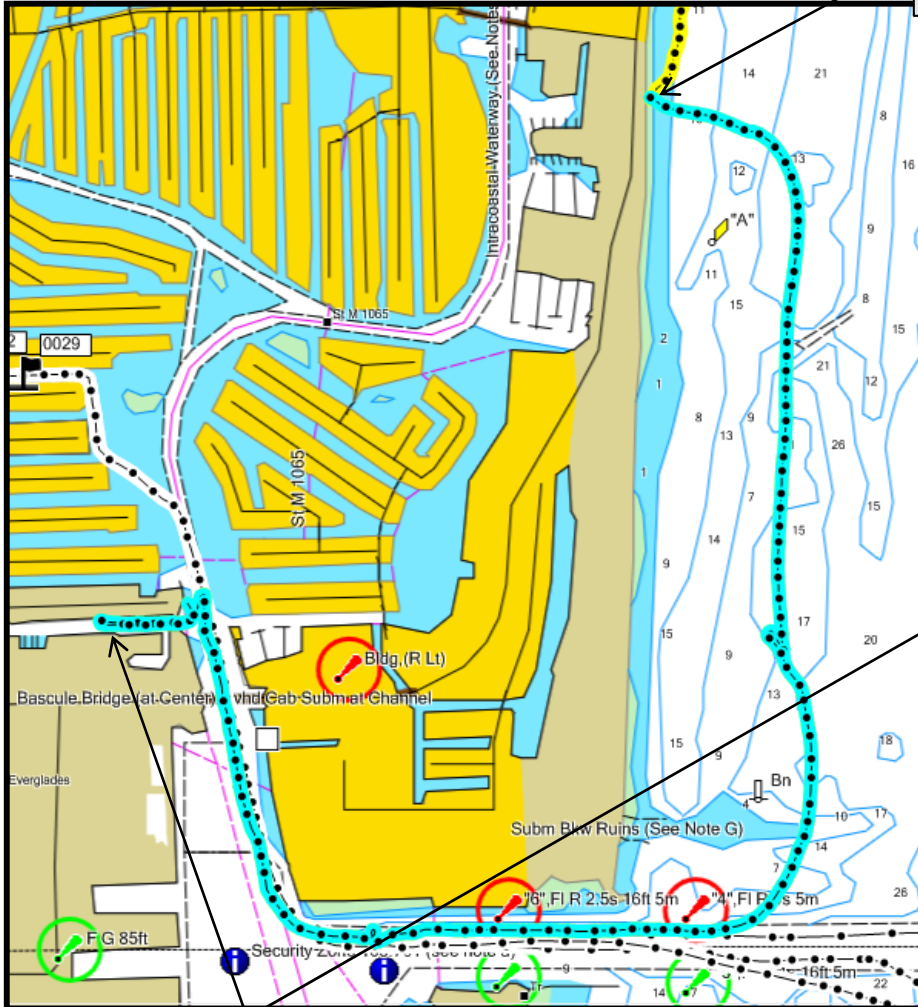
Google Earth view of the data in Garmin GPSMap 5212 for 6/20/2012



View of the data in Garmin GPSMap 5212 for 6/20/2012

Tracks: Blue

5:54:31 AM 0.2 MPH
PSN: N26 07.057 W80 06.237
At Beach



6/20/12 6:48:48 AM
PSN: N26 06.201 W80 07.192

Google Earth view of the end of the track in Garmin GPSMap 5212 for
6/20/2012



6/20/12 6:48:48 AM
PSN: N26 06.201 W80 07.192

Garmin GPSmap 5212 Waypoints (043 Total)

Name	Position	Depth	Temp	Date/Time Modified
2	N26 06.593 W80 07.661			11/2/2011 15:29
3	N26 07.240 W80 04.454			2/8/2012 15:40
4	N26 07.240 W80 04.454			2/8/2012 15:40
5	N26 09.880 W80 04.140			2/8/2012 15:42
6	N26 07.197 W80 04.163			2/8/2012 15:44
9	N26 09.084 W80 00.855			2/18/2012 10:56
10	N26 09.196 W80 00.178	751.0 ft	71.4 °F	2/18/2012 11:09
11	N26 08.422 W80 04.819	57.9 ft	74.7 °F	3/24/2012 11:24
12	N26 08.051 W80 04.874	59.2 ft	74.9 °F	3/24/2012 11:37
13	N26 08.763 W80 04.594	92.7 ft	75.2 °F	3/24/2012 11:52
14	N26 08.609 W80 04.587	98.8 ft	76.6 °F	4/6/2012 10:10
15	N26 08.615 W80 04.637	81.3 ft	76.6 °F	4/6/2012 10:11
16	N26 08.422 W80 04.636	84.0 ft	76.7 °F	4/6/2012 10:39
17	N26 02.566 W80 05.117	85.1 ft	72.6 °F	4/9/2012 10:49
18	N26 02.621 W80 05.107	90.6 ft	72.6 °F	4/9/2012 10:55
19	N26 00.401 W80 05.196	82.6 ft	73.4 °F	4/9/2012 11:43
20	N25 58.896 W80 04.799	128.2 ft	74.8 °F	4/9/2012 14:34
21	N26 25.369 W80 02.478	174.3 ft	71.5 °F	4/27/2012 8:41

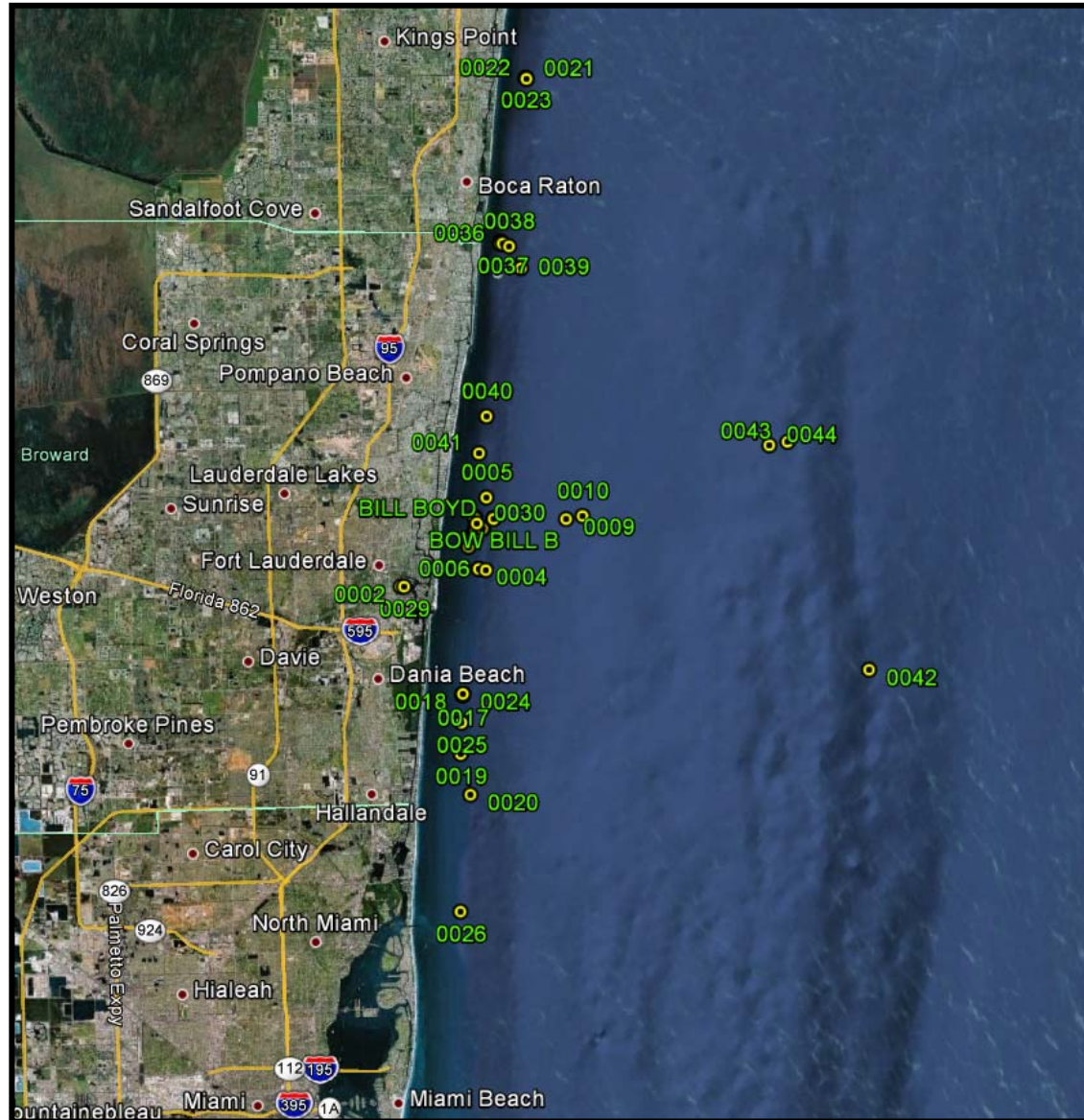
Garmin GPSmap 5212 Waypoints (043 Total)

Name	Position	Depth	Temp	Date/Time Modified
22	N26 25.391 W80 02.497	170.2 ft	71.5 °F	4/27/2012 8:41
23	N26 25.411 W80 02.516	165.4 ft	71.5 °F	4/27/2012 8:41
24	N26 02.621 W80 05.108	87.9 ft	75.2 °F	5/5/2012 10:49
25	N26 01.559 W80 05.170	75.8 ft	75.1 °F	5/5/2012 11:21
26	N25 54.573 W80 05.209	71.9 ft	76.4 °F	5/5/2012 12:34
27	N26 08.737 W80 04.302	146.1 ft	77.9 °F	5/19/2012 16:03
28	N26 08.730 W80 04.297	131.9 ft	77.9 °F	5/19/2012 16:03
29	N26 06.588 W80 07.527	6.5 ft	79.3 °F	5/25/2012 15:31
30	N26 08.920 W80 04.532	100.4 ft	76.9 °F	5/26/2012 11:30
31	N26 09.155 W80 04.612	74.2 ft	77.3 °F	5/26/2012 12:42
32	N26 09.106 W80 04.615	76.3 ft	77.3 °F	5/26/2012 12:42
33	N26 19.323 W80 03.552	58.1 ft	80.2 °F	6/7/2012 16:40
34	N26 19.341 W80 03.543	49.8 ft	80.3 °F	6/7/2012 16:48
35	N26 19.284 W80 03.551	65.9 ft	80.3 °F	6/7/2012 17:05
36	N26 19.263 W80 03.552	68.4 ft	80.7 °F	6/7/2012 19:25
37	N26 19.274 W80 03.461	77.6 ft	80.7 °F	6/7/2012 19:28
38	N26 19.169 W80 03.202	137.8 ft	80.7 °F	6/7/2012 19:30
39	N26 18.360 W80 02.709	325.2 ft	80.6 °F	6/7/2012 19:46

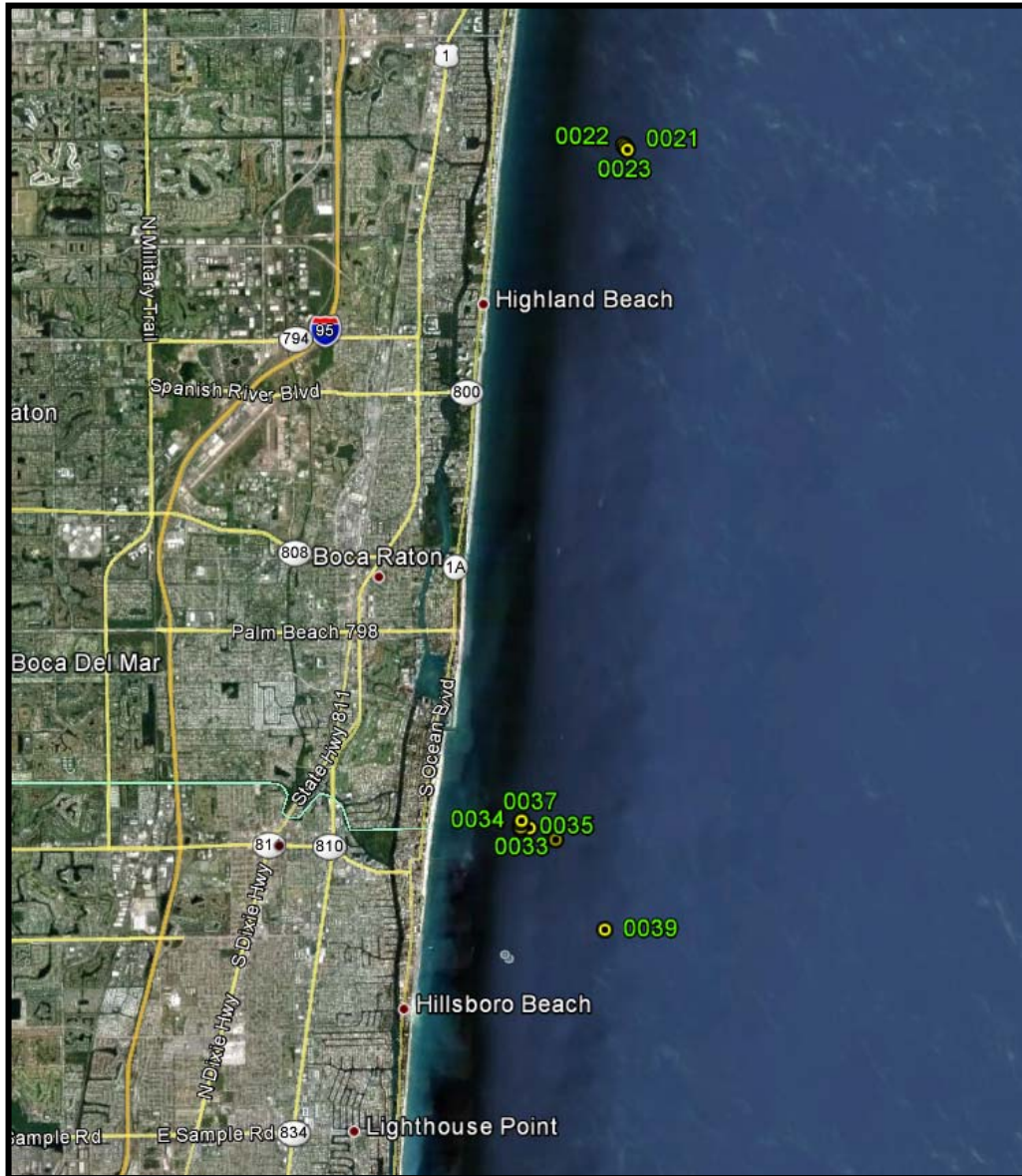
Garmin GPSmap 5212 Waypoints (043 Total)

Name	Position	Depth	Temp	Date/Time Modified
40	N26 12.881 W80 04.131	79.0 ft	77.7 °F	6/8/2012 18:13
41	N26 11.519 W80 04.442	60.2 ft	78.4 °F	6/8/2012 21:15
42	N26 03.496 W79 48.389		78.0 °F	6/15/2012 9:55
43	N26 11.931 W79 51.731	1136.7 ft	78.5 °F	6/15/2012 11:43
44	N26 11.804 W79 52.481	947.3 ft	78.6 °F	6/15/2012 11:51
BILL BOYD	N26 09.088 W80 03.842			2/8/2012 15:49
BOW BILL B	N26 09.118 W80 03.850	276.3 ft	73.5 °F	2/8/2012 17:05

Google Earth view of all Waypoints



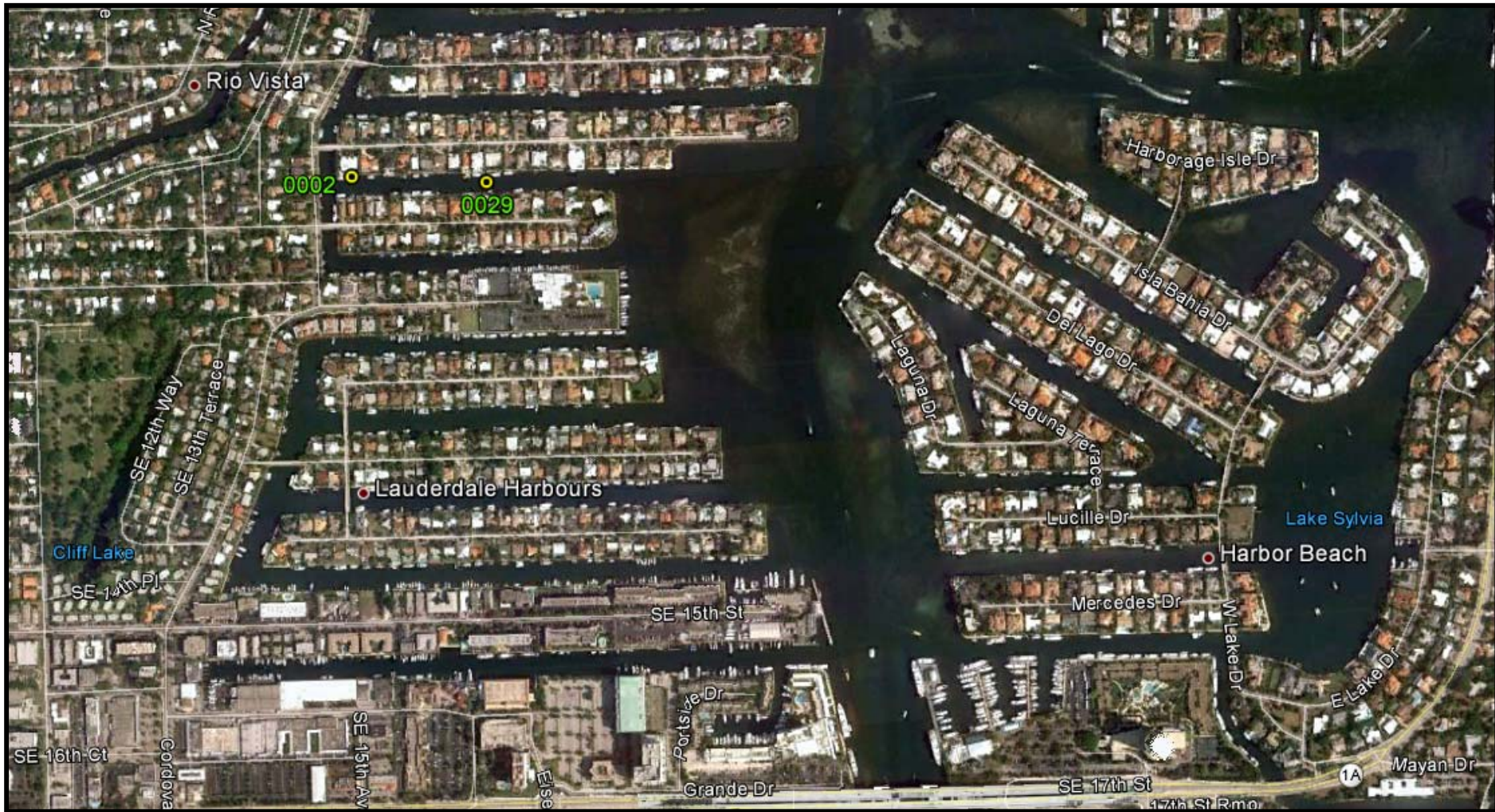
Google Earth view of Waypoint



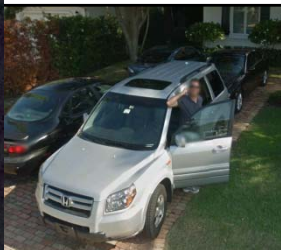
Google Earth view of Waypoints



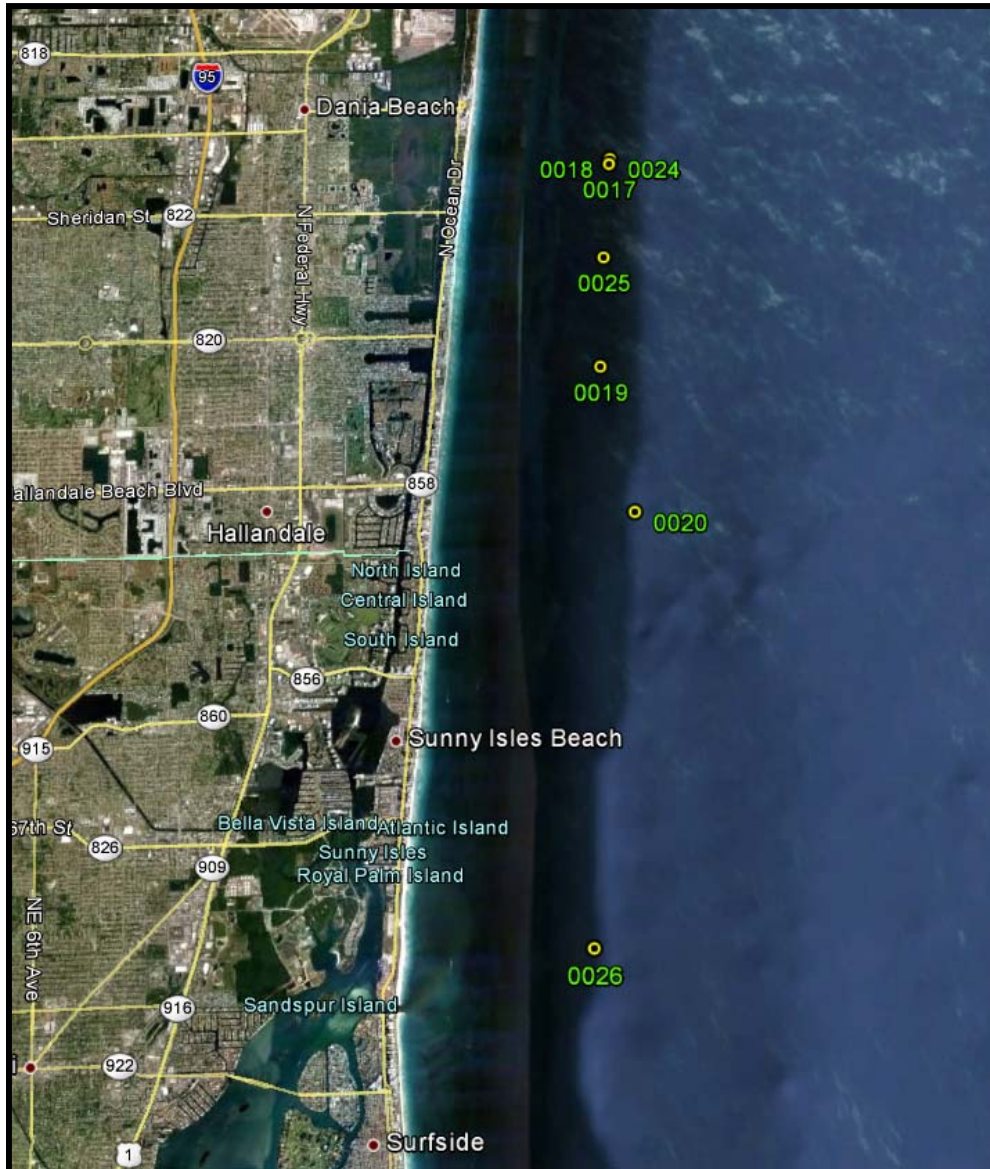
Google Earth view of Waypoints near Gun Cay



Google Earth view of Waypoints near Gun Cay



Google Earth view of Waypoints



ANALYSIS SUMMARY

The Garmin GPSmap 5212 will be referred to as the “device” from this point. The data from this device was extracted by DOMEX at Seatow in Fort Lauderdale. It was anticipated that any data extracted from device would assist in the investigation of a missing person.

END OF ANALYSIS

Tania H. Reyes, ISC, US Coast Guard
Signature

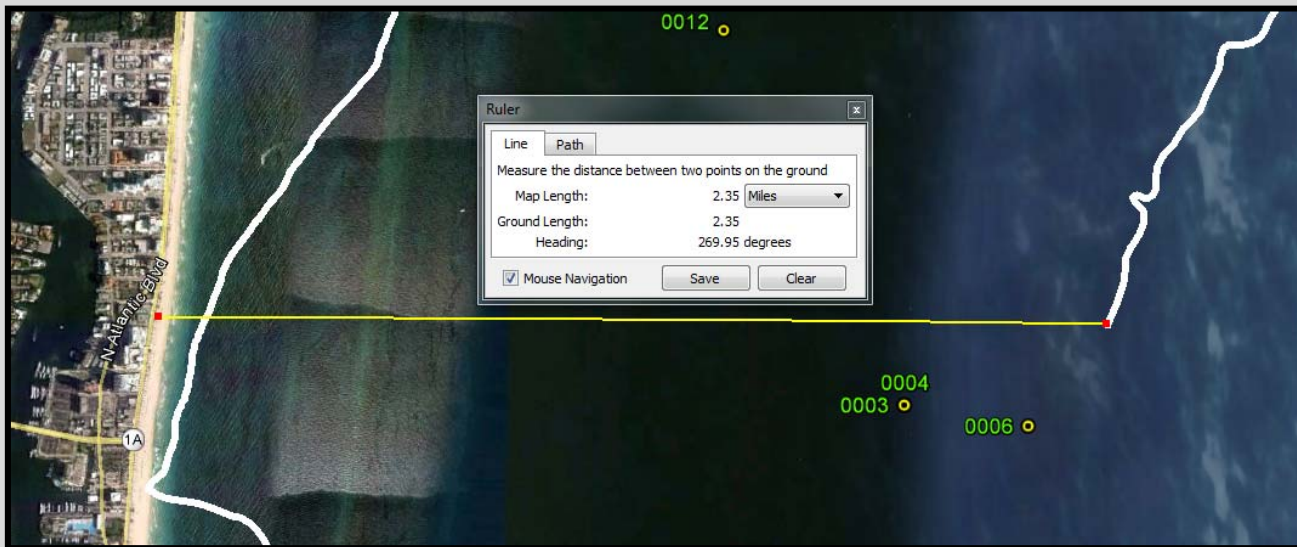
THIS PRODUCT CONTAINS MULTI-AGENCY AND/OR SENSITIVE LAW ENFORCEMENT INFORMATION THAT MAY BE DIRECTLY RELATED TO AN ON-GOING LAW ENFORCEMENT INVESTIGATION. THIS INFORMATION MAY NOT BE USE AS THE BASIS FOR ANY UNITED STATE LEGAL PROCESS, INCLUDING BUT NOT LIMITED TO: PRESENTATION TO GRAND/PETIT JURIES OR ADMINISTRATIVE BODIES; INCORPORATED INTO AFFIDAVITS OR OTHER DOCUMENTS RELATING TO SUBPOENAS, SEARCH, ELECTRONIC SURVEILLANCE OR ARREST-WARRANTS; AND/OR EVIDENCE IN CRIMINAL PROSECUTIONS, NOR MAY IT BE USED IN ANY WAY IN ANY JUDICIAL OR ADMINISTRATIVE PROCEEDINGS WITHOUT PRIOR WRITTEN AUTHORIZATION.

The following slides are for use by case agent only. The following pages are an assessment made by the DOMEX team analyst and are only an opinion. These are not investigated and is not to be used in any court proceedings.

THIS PRODUCT CONTAINS MULTI-AGENCY AND/OR SENSITIVE LAW ENFORCEMENT INFORMATION THAT MAY BE DIRECTLY RELATED TO AN ON-GOING LAW ENFORCEMENT INVESTIGATION. THIS INFORMATION MAY NOT BE USE AS THE BASIS FOR ANY UNITED STATE LEGAL PROCESS, INCLUDING BUT NOT LIMITED TO: PRESENTATION TO GRAND/PETIT JURIES OR ADMINISTRATIVE BODIES; INCORPORATED INTO AFFIDAVITS OR OTHER DOCUMENTS RELATING TO SUBPOENAS, SEARCH, ELECTRONIC SURVEILLANCE OR ARREST-WARRANTS; AND/OR EVIDENCE IN CRIMINAL PROSECUTIONS, NOR MAY IT BE USED IN ANY WAY IN ANY JUDICIAL OR ADMINISTRATIVE PROCEEDINGS WITHOUT PRIOR WRITTEN AUTHORIZATION.

First-Order-Analysis:

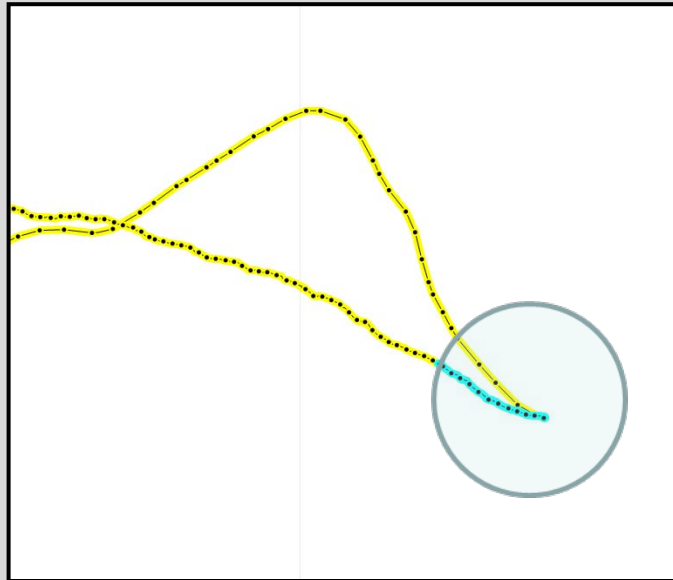
The contained GPS tracks for the day/time in question from June 19th, 2012 thru June 20th, 2012. The vessel track log 003 begins approximately 2.35 miles east of Fort Lauderdale Beach.



(WARNING: THIS IS AN INFORMATION REPORT, NOT FINALLY EVALUATED INTELLIGENCE).

First-Order-Analysis:

At 7:56:07 PM speeds reduce to 4 MPH and at 7:56:16 PM vessel speeds drop to 0.6 MPH. From this point until the vessel beached in Fort Lauderdale the speeds remain below 3 MPH.



(WARNING: THIS IS AN INFORMATION REPORT, NOT FINALLY EVALUATED INTELLIGENCE).

Technical Assessment and Notes

Device data was retrieved on scene at the Seatow facility by the use of an SD card and power from the vessel. The device was analyzed through the use of the Map Source mapping software and Google Earth.

Garmin GPS 5212 Owners Manual

http://static.garmincdn.com/pumac/GPSMAP_4000-5000_Series_OM_EN.pdf